

IV. Needs Analysis

A. General

The Needs Analysis consists of the following elements:

1. The classification of the existing parks and recreation facilities into standard park classifications.
2. A discussion of the parks and recreation area needs by park types.
3. A discussion of the geographic distribution of parks and recreation facilities.
4. A summary of the public workshops and focus groups.
5. A summary of the parks and recreation surveys that were accomplished in 2010.
6. A summary of the pertinent portions of the Horizon Inform Survey for Muhlenberg County.
7. The summary of the benchmark survey that was accomplished among communities in Kentucky.
8. Facilities Needs Analysis and Level of Service Standards based upon accepted standards and guidelines, past experience of the Consultant; and agreed upon by the Master Plan Steering Committee.
9. A discussion of recent trends in parks, recreation, and leisure service.
10. A summary of the overall parks and recreation facilities needs.

B. Park and Recreation Area Needs by Park Type and Planning Areas

The beginning portion of Section III included the table which identified the various classifications of parks and recreation areas. These are consistent with the National Recreation and Park Association Guidelines, and previous Kentucky County plans. A general set of goals for the various park types was established by the Consulting Team and the Master Plan Steering Committee as the Level of Service Standards for Muhlenberg County. These goals are consistent with several recent plans completed by the Consultant and communities throughout the nation. Table 9, Parks and Recreation Land Level of Service Standards, provides a breakdown of the needs for Muhlenberg County. This table includes many community parks and neighborhood parks that are part of school sites because they do serve some of the park needs for residents.

Table 9: Parks and Recreation Land Level of Service Standards

**Parks and Recreation Needs by Park Type
Muhlenberg County, Kentucky**

Park Type	Existing Developed Acres	Recommended Acres/1000 Population	2010 Recommended Acres	2010 Surplus Deficit(-)
Mini-Park	8.38	0.5	15.56	-7.18
Neighborhood ¹	70.03	2	62.24	7.79
Community ²	70.19	2.5	77.8	-7.61
County	0	5	155.6	-155.6
State	347.79	5	155.6	192.19
Special Use	37.76	N/A	N/A	N/A
Nature Park	11.97	N/A	N/A	N/A
Linear	4.15	N/A	N/A	N/A
Total	550.27	15	466.8	29.59

1. Neighborhood Parks include 23.95 acres at school sites.
2. Community Parks include 41.39 acres at school sites.

Population projections provided by the Kentucky State Data Center

2010 = 31,120

2015 = 30,852

2020 = 30,507

2010 figures used since only minor changes are expected.

In general, this table identifies that there is a shortage of about 155 acres of developed County Park land and about 8 acres of Community Park land. Lake Malone State Park makes some of the overall deficit, but the shortage of County Park land is the main need.

Table 10: Parks and Recreation Facility Needs

**APPLICATION OF RECREATION FACILITY GOALS
MUHLENBERG COUNTY PARKS & RECREATION MASTER PLAN**

FACILITY	POPULATION GOAL (1 PER)	2010 EXISTING SUPPLY Public Facilities ⁴	2010 REQUIRED ¹	2010 SURPLUS (+) DEFICIT (-)
Outdoor Areas				
A. Picnic Shelter	2000	17	15.6	1.4
B. Playground	1500	26	20.7	5.3
C. Paved Trails (miles)	4000	6.75	7.8	-1.0
D. Unpaved Trails (miles)	5000	0.5	6.2	-5.7
E. Swimming Pool	20000	1	1.6	-0.6
F. Outdoor Theater	50000	0	0.6	-0.6
Outdoor Fields & Court Areas				
A. Baseball/Softball	2500	18	12.4	5.6
B. Soccer	5000	4	6.2	-2.2
C. Football	15000	2	2.1	-0.1
D. Basketball Courts	3000	12	10.4	1.6
E. Tennis Courts	3500	10	8.9	1.1
F. Volleyball Courts	10,000	0	3.1	-3.1
Indoor Areas/Specialized Facilities				
A. Indoor Pool	50000	1	0.6	0.4
B. Game Court	15000	6	2.1	3.9
C. Recreation/Community Center	50000	1	0.6224	0.4

1. Based on a year 2010 population estimate of 31,120. Source: Kentucky State Data Center
2. All county owned/leased facility and facility at schools that are accessible to the public are included.
3. Due to rounding, all figures do not add exactly.

The population goals in Table 10 were agreed upon by the Master Plan Steering Committee and reflect the community’s needs based upon the stakeholder group meetings, public workshops, and surveys of residents. The negative numbers in the right column indicate the facilities with a shortage. The largest is for unpaved trails at 5.7 miles. Other deficits are indicated for paved trails, soccer fields, volleyball courts, outdoor theater, and a swimming pool.

C. Distribution of Parks and Facilities (Figure 2)

Figure 2, Park Service Areas Map, indicates an inventory of the existing parks, schools, private parks, and identifies the service areas for each of these various types of parks. The yellow circles indicate areas within a quarter mile of a mini-park, neighborhood park, community park or county park. The light beige circles identify areas within a half mile of a neighborhood park, community park, or county park. The light brown indicates areas within one mile of a community or county park and the darkest brown color indicates the areas within two miles of a

county or state park. The existing Rail-Trail is indicated on this map by the orange lines. This map serves to indicate the gaps where neighborhoods or communities are not served very well by parks.

This figure indicates that most of the populated areas are served by at least a neighborhood park with the exception of the Graham area. The best served areas are in Powderly, Greenville and Central City where the population is the most dense.

D. Geographic Distribution of Facilities

Another analysis is a review of the geographic distribution of specific types of facilities that are provided to residents. These are indicated on Figures 3-9. These maps indicate the parks and schools with the various facilities in the yellow squares. Below are discussions of each of the specific facilities:

1. Parks With Picnic Shelters

Figure 3 identifies that the majority of the picnic shelters are fairly evenly distributed. The main areas lacking shelters are Graham and Beechmont areas.

2. Parks With Playgrounds

Figure 4 identifies the location of playgrounds throughout the county which are fairly well distributed, but shows gaps in the Graham and Beechmont areas.

3. Parks With Baseball/Softball Fields

Figure 5 identifies the location of parks or schools with baseball and/or softball fields throughout the county. The main area lacking fields is the Graham area. The need for fields may change soon due to possible consolidation of the various Little League organizations.

4. Parks/Schools With Soccer Fields

Figure 6 clearly identifies that there are only two locations within the project area that host soccer fields with those being located Bremen School (which will be removed due to school construction) and the main soccer fields at the North Middle/Longest Elementary Schools. For soccer to grow, more fields will need to be developed to encourage the sport.

5. Parks/Schools With Tennis Courts

Figure 7 clearly indicates that the only tennis courts in the county are located at Greenville Elementary School, Morgan Park in Greenville (which are on adjacent sites) and at the East Campus of Muhlenberg County High School. Private courts are also located at Greenville and Central City Country Clubs. This figure clearly shows a lack of access to

tennis courts in Central City, Powderly, Graham, Bremen, South Carrollton, Drakesboro, Beechmont, Weir and Dunmor.

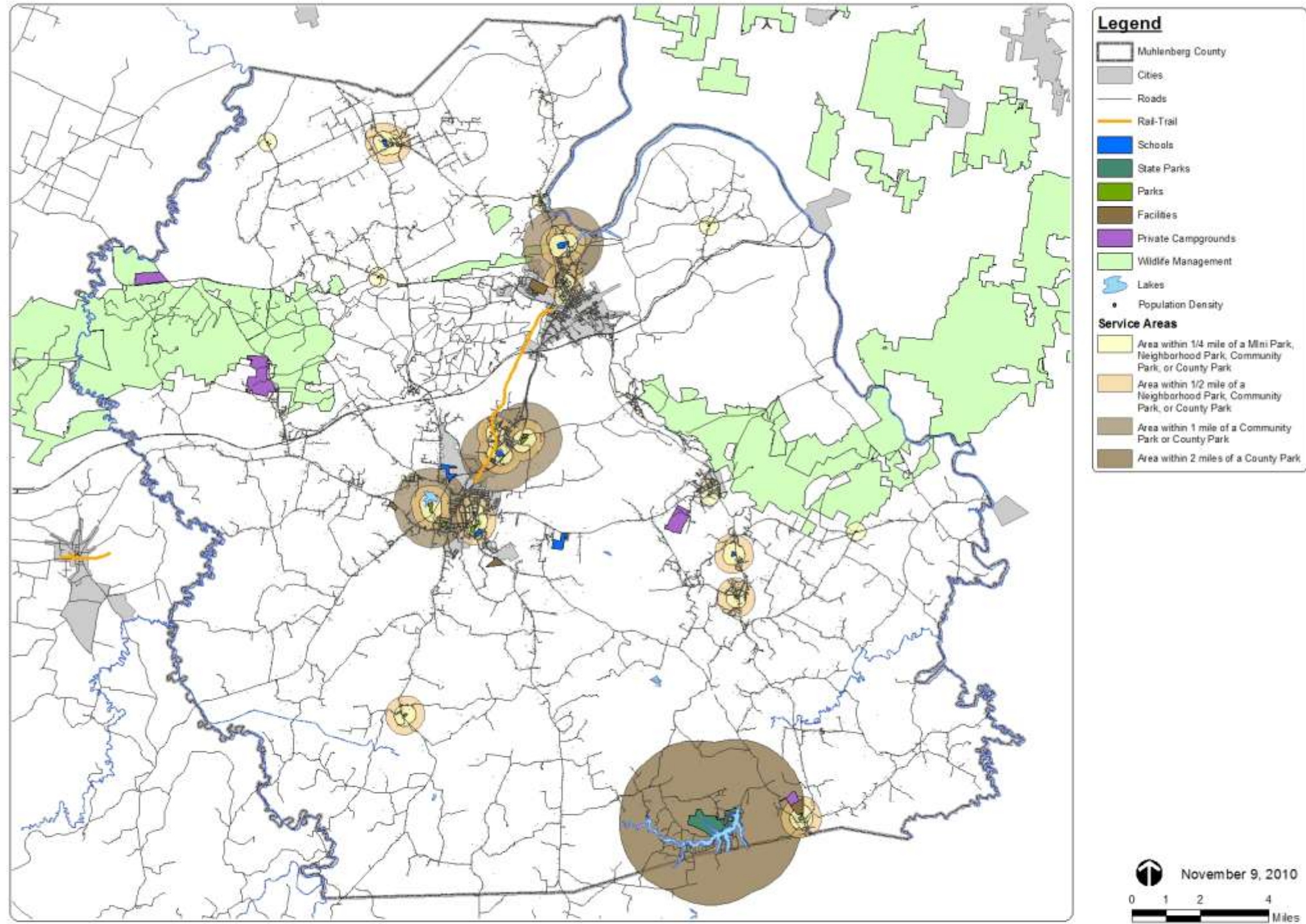
6. Parks/Schools With Outdoor Basketball Courts

Figure 8 identifies the locations of outdoor basketball courts at parks and schools in the county. These indicate outdoor basketball courts at a variety of sites with gaps in the communities of Beechmont, Dunmor, and Graham. With basketball being such a popular sport in Kentucky, more courts are needed.

7. Swimming Pool and Private Swim Club Locations

Figure 9 identifies the location of the private swim clubs and public swimming pools that are located throughout the county. There is a public swimming pool in Morgan Park in Greenville. The pool in Central Park in Central City was closed in 2010 due to its age and poor condition. Central City plans to develop a new pool at the Wellness Center site. In addition, both Greenville and Central City Country Clubs offer swimming pools.

Figure 2: Park Service Areas

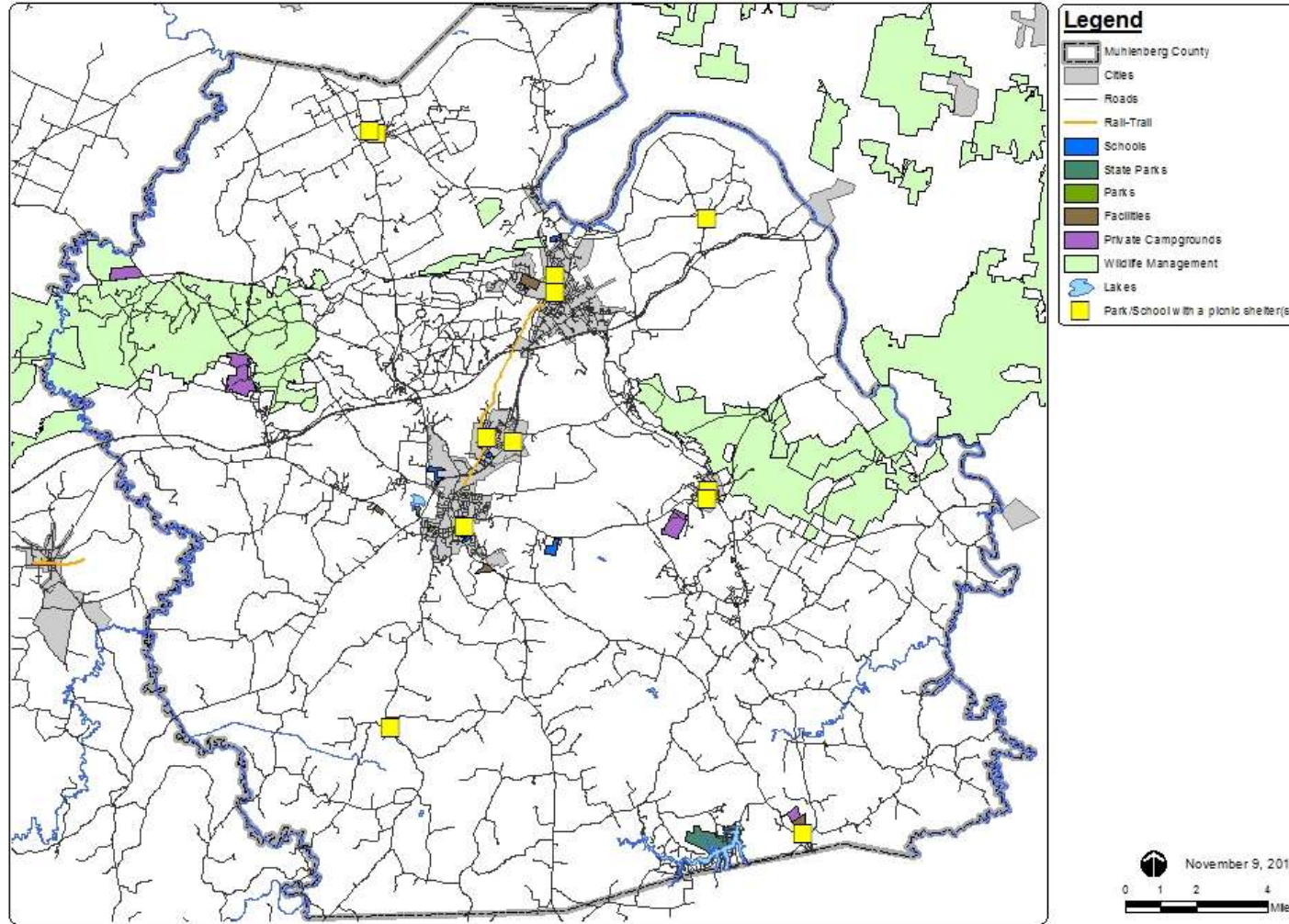


MUHLENBERG COUNTY
Parks and Recreation Master Plan

Brandstetter Carroll Inc.
Architects Engineers Planners
Lexington Louisville Cincinnati Cleveland

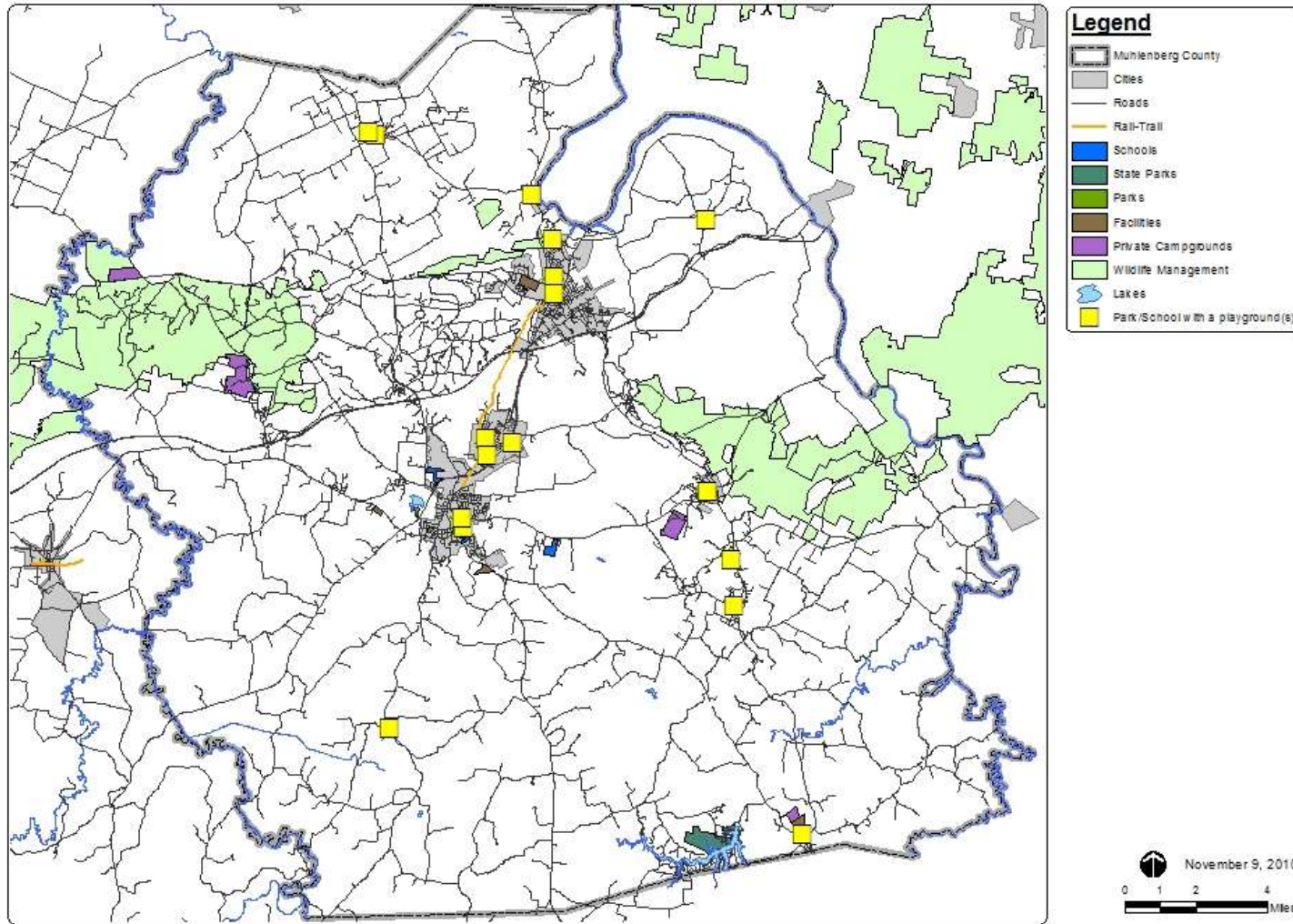
Park Service Areas

Figure 3: Parks with Picnic Shelters



MUHENBERG COUNTY
Parks and Recreation Master Plan

Figure 4: Parks with Playgrounds

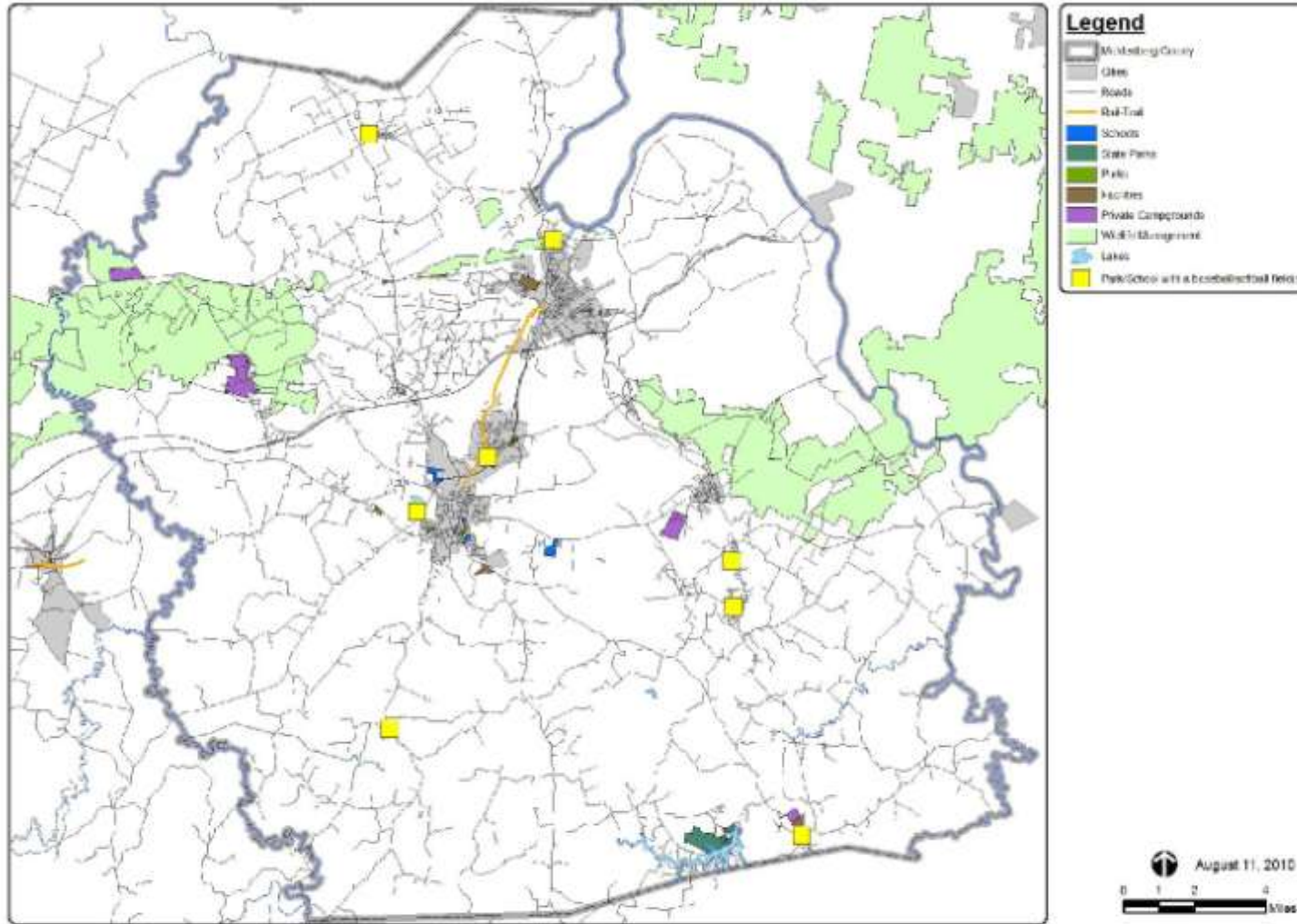


 Brandstetter Carroll Inc.
Architects Engineers Planners
Lexington Louisville Orlando Cleveland

Playgrounds

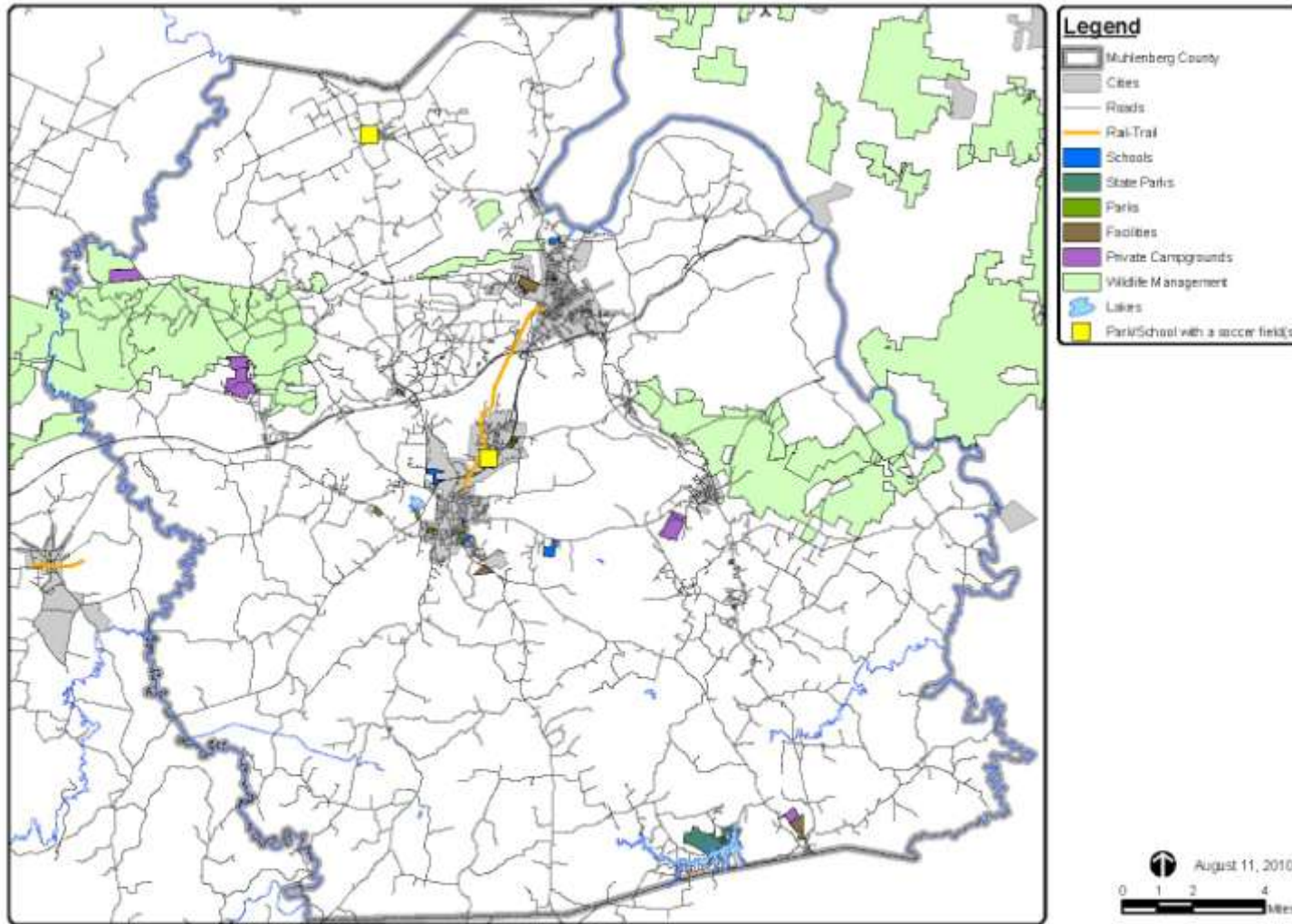
MUHLENBERG COUNTY
Parks and Recreation Master Plan

Figure 5: Parks/Schools with Baseball/Softball Fields

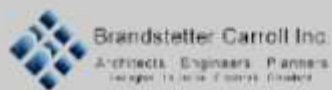


MUHLENBERG COUNTY
Parks and Recreation Master Plan

Figure 6: Parks/Schools with Soccer Fields

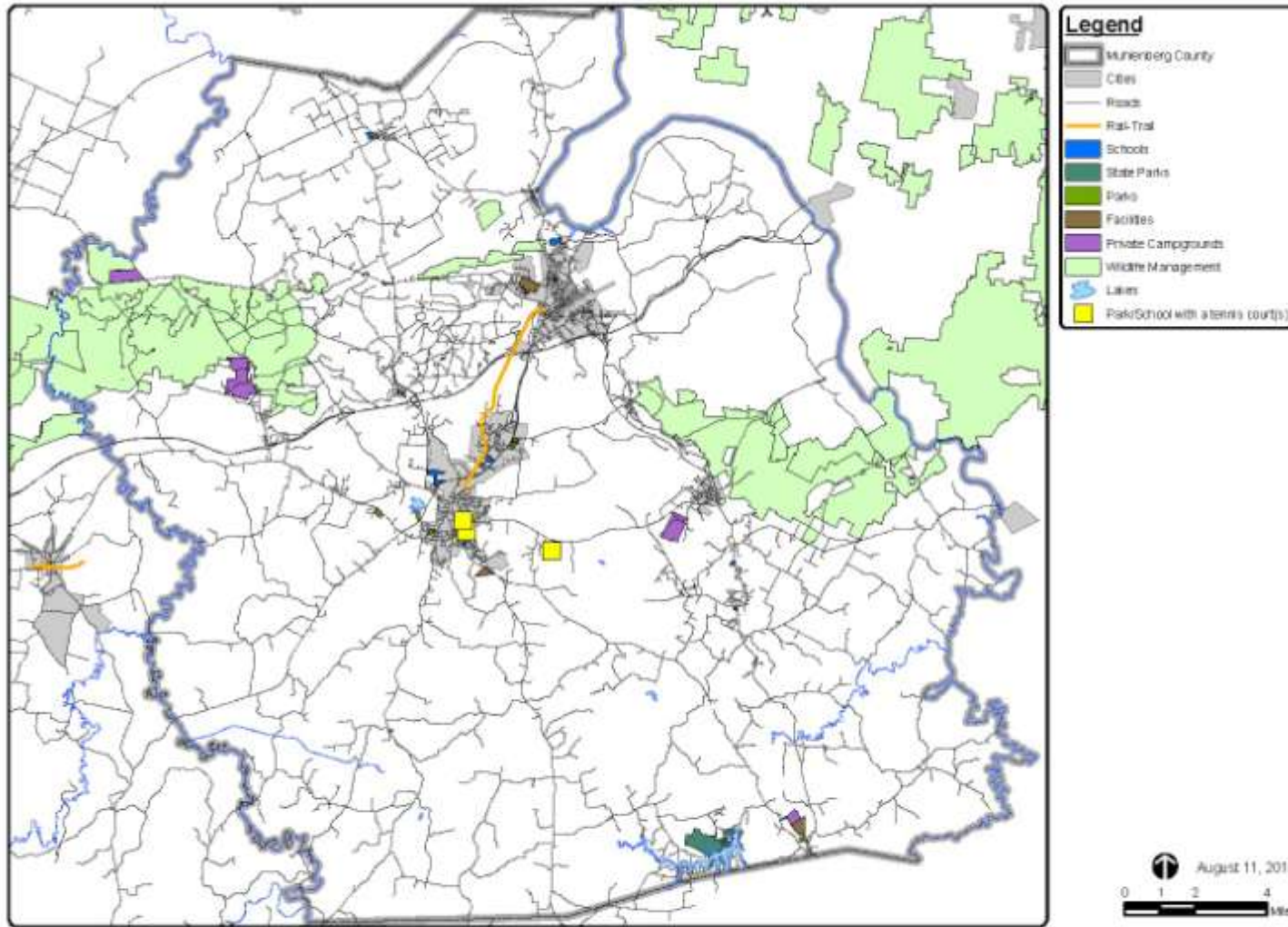


MUHLENBERG COUNTY
Parks and Recreation Master Plan



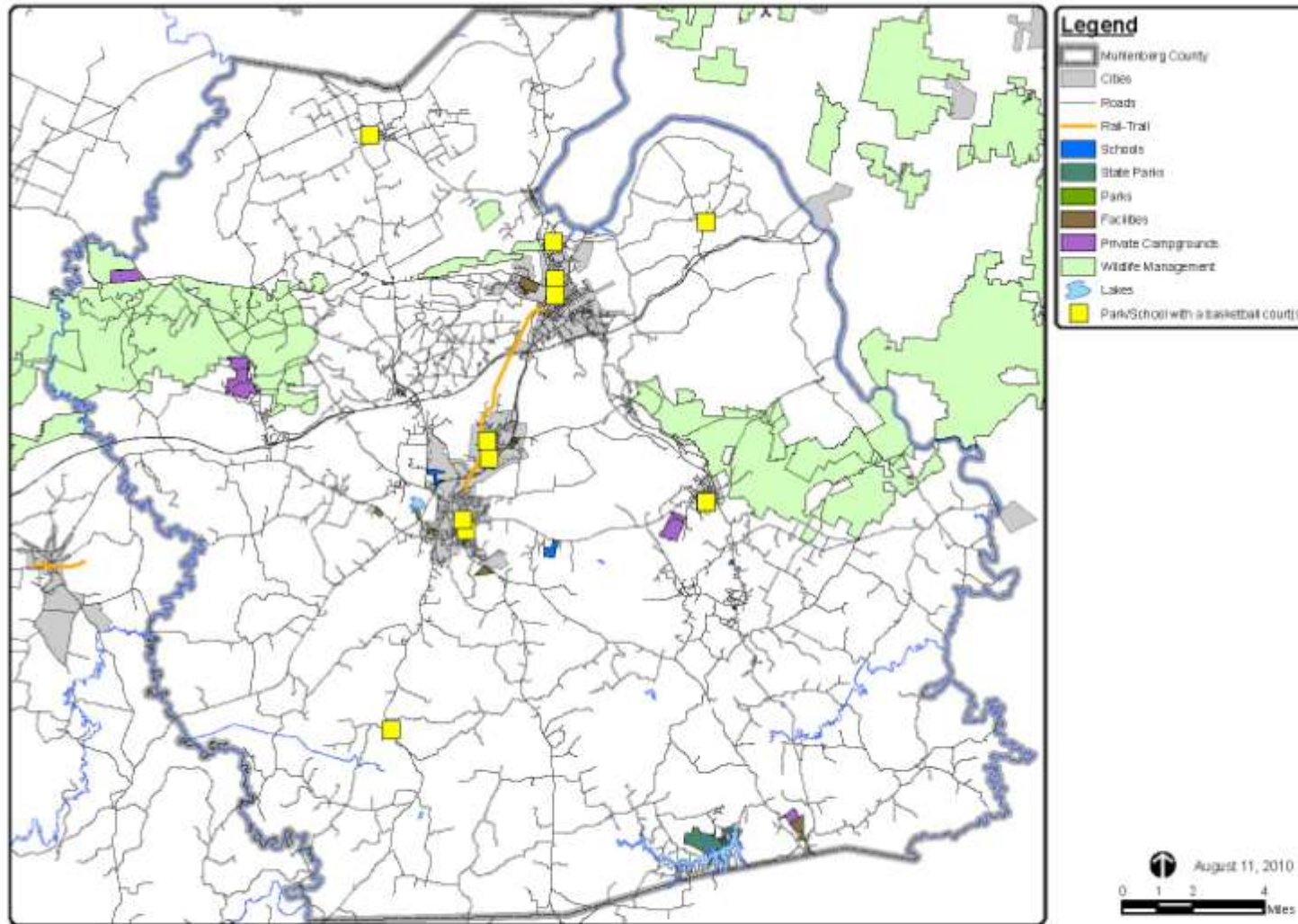
Soccer Fields

Figure 7: Parks/Schools with Tennis Courts



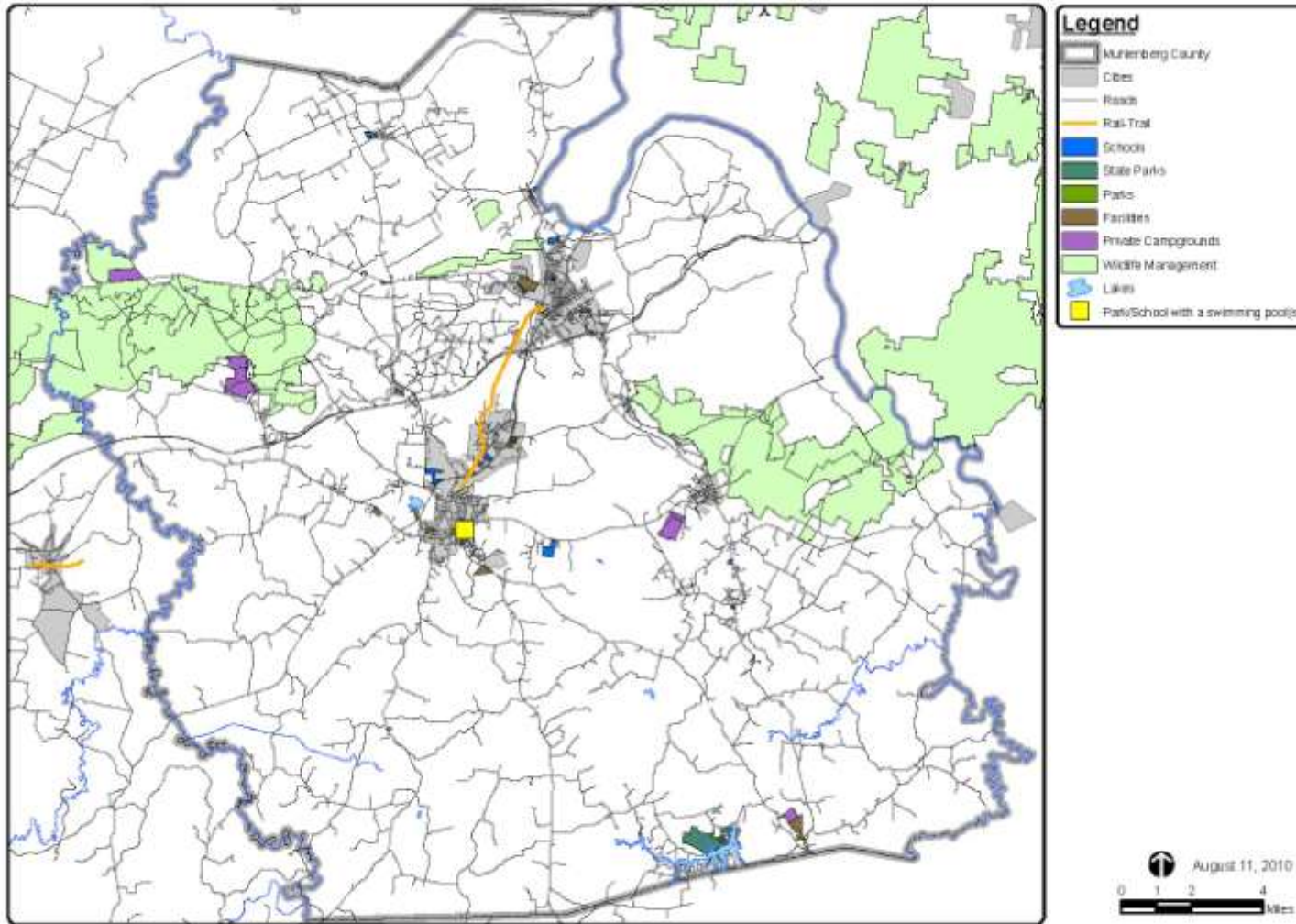
MUHLENBERG COUNTY
Parks and Recreation Master Plan

Figure 8: Parks/Schools with Outdoor Basketball Courts



MUHLENBERG COUNTY
Parks and Recreation Master Plan

Figure 9: Swimming Pools and Swim Clubs



MUHLENBERG COUNTY
Parks and Recreation Master Plan

E. Citizens Served per Park Acre

In comparison to typical level of service standards used throughout the state for developed park land, Muhlenberg County is well below the standard for all types of park land including mini-parks, neighborhood parks, community parks and county parks by about 170 acres.

The Park and Recreation Department Benchmarking analysis included a survey that was sent to several other departments throughout the region including cities, and counties. These tables are included in Appendix D. A comparison to 24 other communities in Kentucky indicates that Muhlenberg County and City owned developed park land (not including golf courses or school land) provides a level of 217 citizens per acre. The average of the other communities was 245 and the median is 174. The national median of departments is 132 citizens per developed park acre.

The Cities and the County provide 4.61 total park acres per 1000 residents (6.68 with schools) compared to the average of 11.3 and median of 5.75. Therefore, Muhlenberg County provides less than the average and median of the other communities.

F. Public Workshops

A complete summary of the public workshop, which was held on April 20, 2010 at Greenville Elementary School at the beginning of the master plan process, is included in Appendix B.

The public workshop at the beginning of the process asked people where they currently go for parks and recreation, what they like about Muhlenberg County Parks, what they do not like or what is missing from the parks and recreation or what can be improved, and finally what is their vision for the future of parks and recreation. The people in attendance at this meeting visit a variety of parks within the County, but also attend parks and facilities in the surrounding communities such as: several facilities in Owensboro: skate parks in Owensboro, Bowling Green and Louisville; Land Between the Lakes; Lake Barkley; Henderson Riverfront; and State Parks. Other activities for which they travel to other communities include summer camps, programs, horseback riding, ATV riding, disc golf, horse shows, and a variety of parks.

The most positive aspects of parks and recreation in Muhlenberg County include the following:

1. Agricultural Center, which is large enough and safe for activities
2. Parks that are drug free
3. The Rail Trail is well used
4. The nature and beauty of the county
5. The variety of activities
6. The convenience and social atmosphere of parks

7. Paradise Park for the music history, coal history, playgrounds, and the fact that there are no neighbors

From these meetings, a **public workshop vision** was established which included the following components:

1. Facilities
 - a. Covered arena and classroom for equestrian programs
 - b. Horse trails
 - c. New parks in Drakesboro and Cleaton
 - d. Accessible playgrounds
 - e. Better lighting, parking, restrooms, picnic facilities, etc.
 - f. 3-4 complexes in the county
 - g. Shooting and archery park
 - h. Skate park
 - i. Dog park
 - j. Spraygrounds
 - k. Bowling alley
 - l. Expand the Rail-Trail
2. Management
 - a. Coordinated and efficient approach to develop a comprehensive recreation program
 - b. Sustainable park system
 - c. Parks and Recreation Director
 - d. Continue strong bond with Board of Education
 - e. Volunteer program
3. Programs
 - a. Geared at building character
 - b. Affordable fees
 - c. Teen activities in Paradise Park
 - d. Teen oriented activities in a recreation center
4. Access
 - a. Transportation to programs and facilities
 - b. Jobs for young people
5. Economic Development
 - a. Attract visitors from outside the county
 - b. Keep county residents in the county for activities

- c. Jobs for young people

G. Stakeholder Meetings

The Master Plan Team met with several organizations and staff members related to the delivery of parks and recreation services in Muhlenberg County and the immediate area. The groups included the following organizations:

1. Athletic Organizations & Interests
 - a. Tae Kwon Do
 - b. Junior Pro Basketball
 - c. Intramural Basketball
 - d. Swimming – High School and SKY
 - e. Youth Baseball & Softball - Bremen Little League; Central City Little League; Beechmont Little League
 - f. Tennis
 - g. Upward Sports
 - h. Muhlenberg County Youth Soccer
2. Community Organizations
 - a. NAACP
 - b. Chamber of Commerce
 - c. Rotary and Lions Clubs
 - d. Senior Citizens
 - e. Fun Over Forty
 - f. RSVP Program
 - g. Senior Citizen Center
 - h. Girl Scouts
 - i. Boy Scouts
 - j. Historic Preservation
3. City and County representatives included:
 - a. Central City
 - b. Greenville
 - c. County Judge and Clerk
4. Muhlenberg County Schools representatives included:
 - a. Superintendent
 - b. Principals

- c. High School Students
- 5. Program Organizations
 - a. YMCA
 - b. UK Cooperative Extension
 - c. 4H
 - d. Horse Drill Team
 - e. Shooting Sports
 - f. Arts and Culture
 - g. Special Needs
 - h. Central City Convention & Wellness Center
- 6. Trails
 - a. Rails to Trails
 - b. ATV Trails

Each of these groups was asked to identify their current relationship to Muhlenberg County, specific information about the organization and their participation in programs, and ways in which parks and recreation could be improved. Ultimately, each group was asked for their vision for the future of parks and recreation in Muhlenberg County. Some of the key elements that were discussed in the vision items include the following:

- 1. Programming
 - a. Youth programs
 - b. Senior programs
 - c. Life skills programs
 - d. After-school activities
 - e. Summer camps
 - f. YMCA type programs
 - g. Programs to build character
 - h. Transportation to programs
- 2. Park Maintenance
 - a. Better Maintenance of parks
 - b. One department to manage and operate all parks
- 3. Improve existing parks
 - a. Restrooms
 - b. Drinking fountains
 - c. Better maintenance

- d. Upgrade playground equipment and safety issues
 - e. Covered grandstands at ball fields
 - f. Improvements to complete Paradise Park
4. New Parks and Facilities
- a. At least 2 large parks
 - b. A large central park with multiple activities, sports fields, picnic areas, trails and passive areas – Similar to Mike Miller Park in Marshall County
 - c. Smaller close-to-home parks
 - d. Larger outdoor concert venue
 - e. Indoor and outdoor horse arena with classroom
 - f. Shooting range and classroom
 - g. Outdoor family aquatic center
 - h. Dog park
 - i. Nature areas
 - j. Youth football field
 - k. Youth baseball complex for combined leagues and tournaments
 - l. Skate Park – Teen Park
 - m. Picnic shelters
 - n. Canoeing and fishing areas
 - o. Spraygrounds
 - p. Handicapped accessible playgrounds
 - q. Orienteering area
 - r. Paintball and laser tag
 - s. Boat ramps
 - t. Trails
 - (1) Widen the Rail-Trail
 - (2) Light the Rail Trail center section
 - (3) Expand the Rail-Trail
 - (4) Into Downtown Greenville and Central City
 - (5) Extend to MCHS East and West Campuses
 - (6) Connect communities, schools, and parks
 - (7) BMX Trails
 - (8) Equestrian trails

- (9) Trail around Lake Luzerne
- u. Indoor Recreation
 - (1) Basketball Sports Complex
 - (2) Walking track
 - (3) Climbing wall
 - (4) Indoor baseball batting and pitching facility
 - (5) Tennis courts
 - (6) Dance studio
 - (7) Martial arts studio
 - (8) Teen area and programs
 - (9) Community meeting space
 - (10) Kitchen
- 5. Recreation Administration
 - a. County-wide Parks and Recreation Department to consolidate management of all parks and programs.
 - b. Combine the Little Leagues

More specific information and summaries from these stakeholder groups can be found in Appendix B.

H. Community Attitude and Interest Survey

1. Mail/Phone Survey - Overview and Methodology

Muhlenberg County conducted a Community Attitude and Interest Survey during the winter of 2010 to establish priorities for the future development of parks and recreation facilities, programs, and services within the community. The survey was designed to obtain statistically valid results from households throughout Muhlenberg County. The survey was administered by a combination of mail and phone.

Leisure Vision worked with the Steering Committee, as well as members of the Brandstetter Carroll Inc. project team in the development of the survey questionnaire. This work allowed the survey to be tailored to issues of strategic importance to effectively plan the future system.

Leisure Vision mailed surveys to a random sample of 2,000 households in Muhlenberg. Approximately three days after the surveys were mailed, each household that received a survey also received an electronic voice message encouraging them to complete the survey. In addition, about two weeks after the surveys were mailed, Leisure Vision began contacting households by phone. Those who indicated they had not returned the survey were given the option of completing it by phone.

The goal was to obtain a total of at least 400 completed surveys. This goal was accomplished, with a total of 422 surveys having been completed, including 48% from residents within the six incorporated cities and the remaining 52% living in the unincorporated areas of the county. The results of the random sample of 589 households have a 95% level of confidence with a precision of +/- 4.8%.

2. Handout/Web Survey

In addition to mail and phone survey, the Consultants prepared a handout and web based survey using Survey Monkey. A total of 154 residents completed these forms with 86 of those being from centrally located communities of Greenville, Powderly and Central City and the remaining 68 other areas of the county. Note that in the tables on the following pages, the results of the mail and handout survey are the graphics with red numbers indicating the results from the web and handout based survey.

3. National Benchmarking

Since 1998, Leisure Vision (a division of ETC Institute) has conducted household surveys for needs assessments, feasibility studies, customer satisfaction, fees and charges comparisons, and other parks and recreation issues in more than 200 communities in over 35 states across the country.

The results of these surveys have provided an unparalleled data base of information to compare responses from household residents in client communities to “National Averages” and therefore provide a unique tool to “assist organizations in better decision making.” The National Benchmarking summary is included in Appendix C. Selected information is included on the charts in this section.

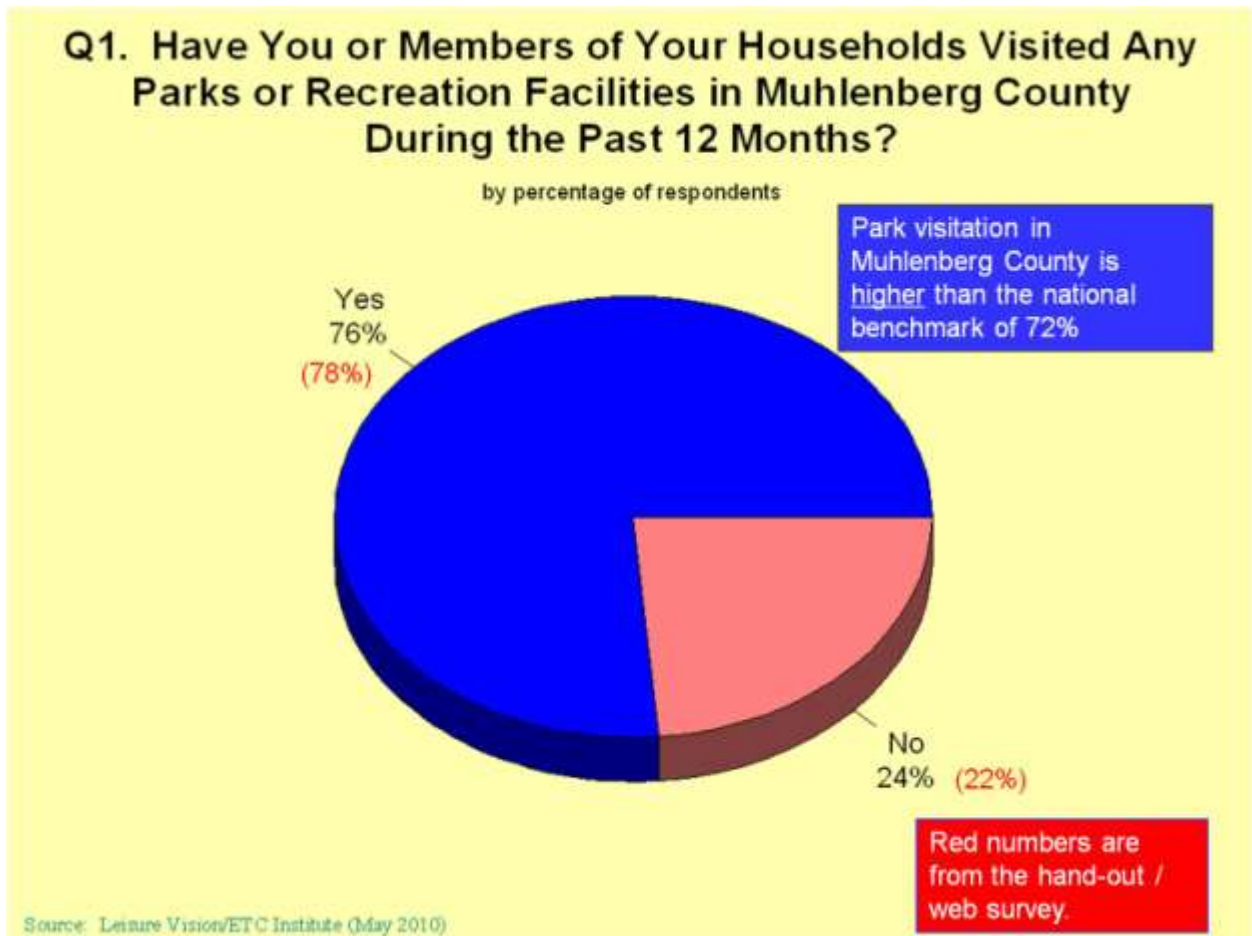
I. Survey Results

The following pages summarize major survey findings.

1. Visitation of Parks/Facilities in Muhlenberg County During the Past 12 Months

Respondents were asked to indicate if any members of their household have visited any parks or recreation facilities in Muhlenberg County during the past 12 months. The following summarizes key findings:

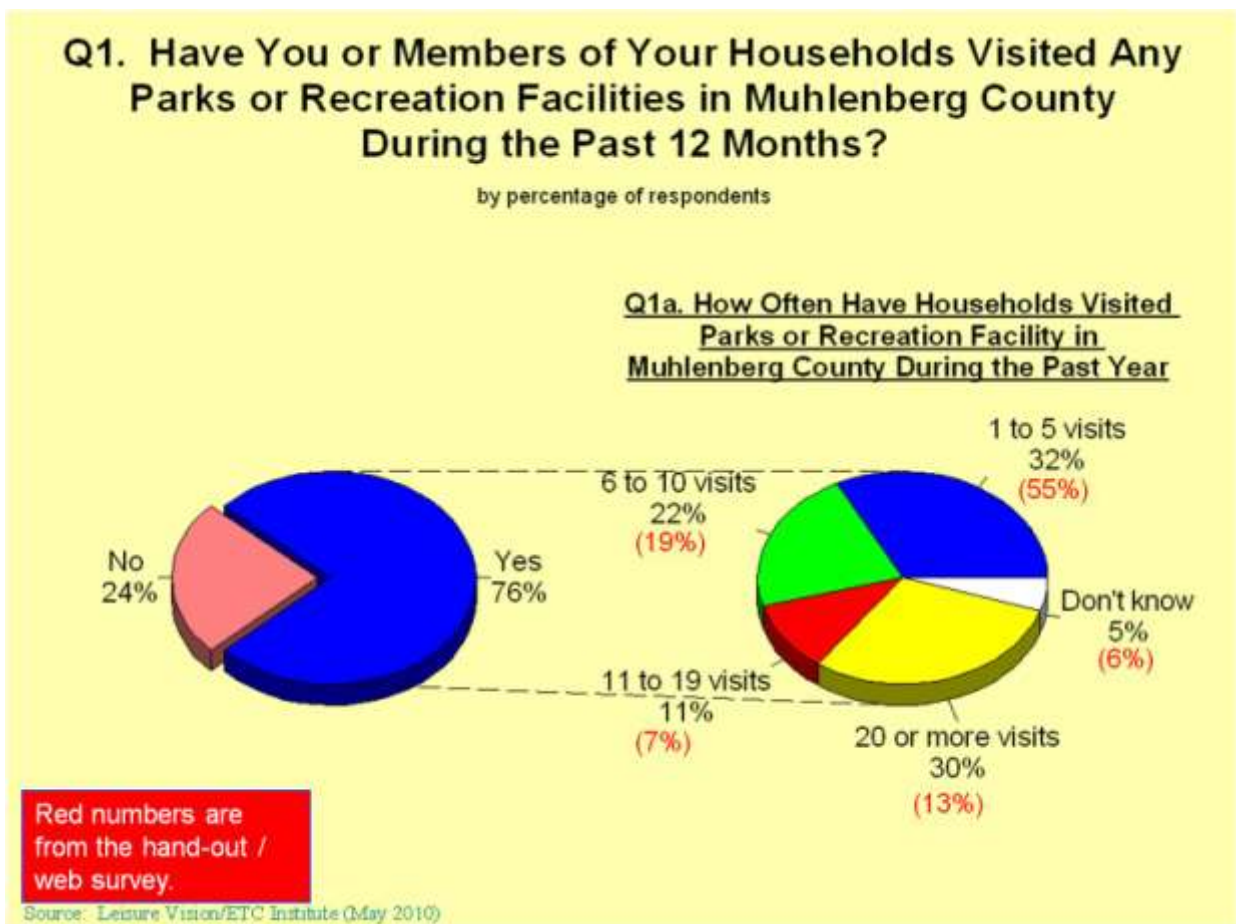
- Seventy-six percent (76%) of households have visited parks and recreation facilities in Muhlenberg County during the past 12 months.



2. Frequency of Visiting Parks/Facilities in Muhlenberg County

Households that have visited parks and recreation facilities in Muhlenberg County during the past 12 months were asked to indicate how often they've visited parks/facilities during that time. The following summarizes key findings:

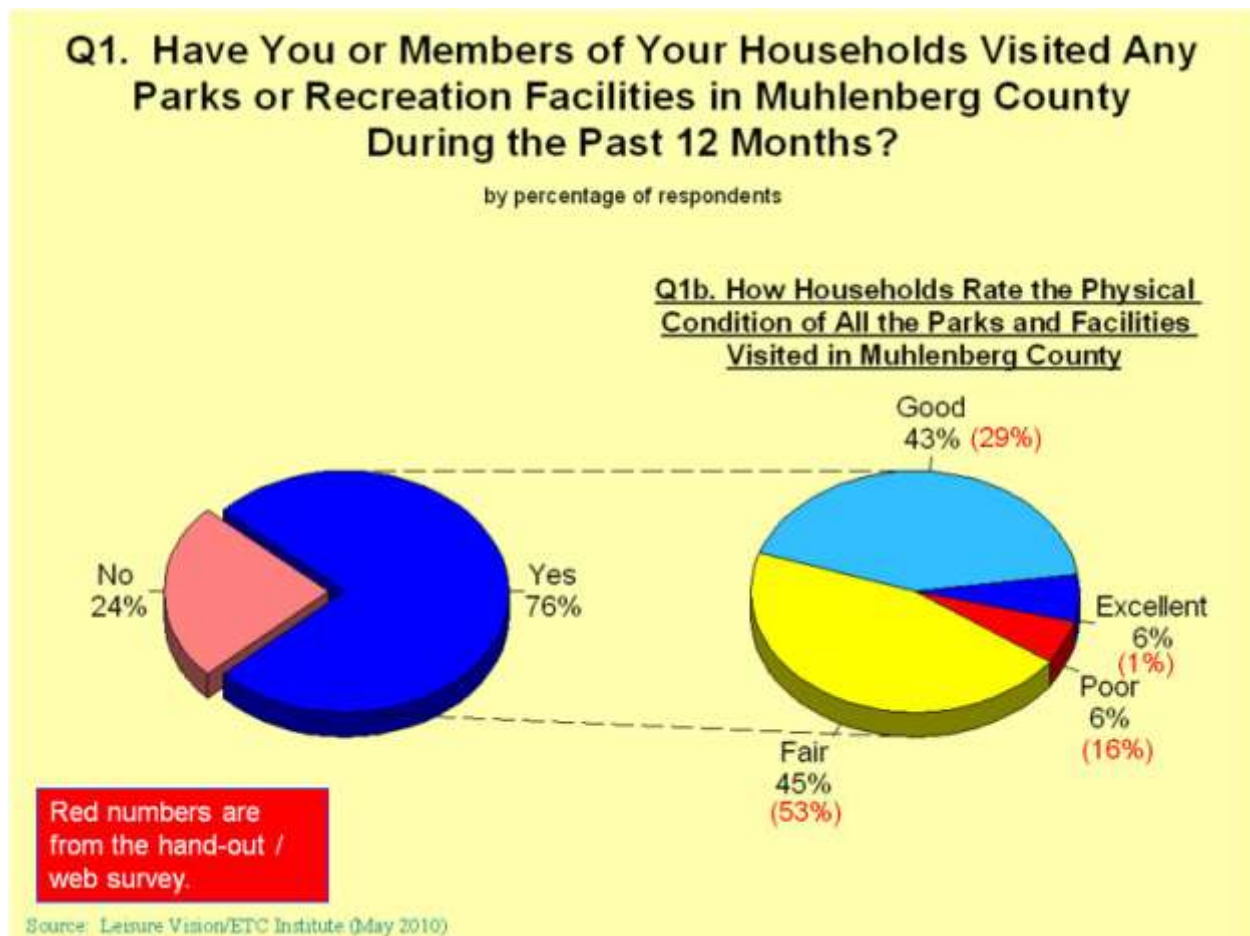
- Of the 76% of households that have visited parks and recreation facilities in Muhlenberg County during the past 12 months, 63% have visited parks/facilities at least six times.



3. Physical Condition of Parks/ Facilities in Muhlenberg County

Households that have visited parks and recreation facilities in Muhlenberg County during the past 12 months were asked to rate the physical condition of all the parks/facilities they have visited. The following summarizes key findings:

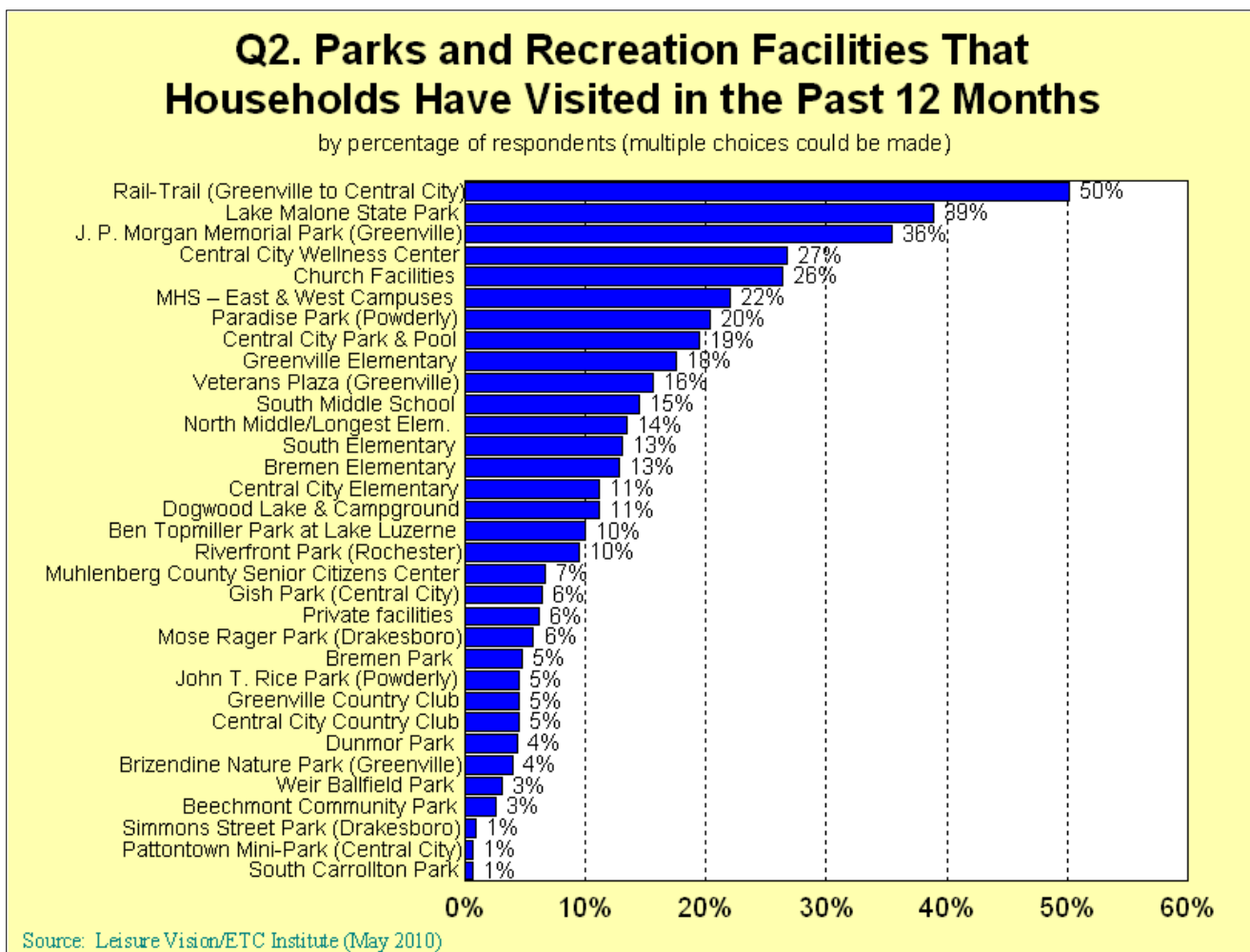
- Of the 76% of households that have visited parks and recreation facilities in Muhlenberg County during the past 12 months, 49% rated the physical condition of the parks/facilities they've visited as either excellent (6%) or good (43%). In addition, 45% of households rated the parks/facilities as fair, and 6% rated them as poor.



4. Parks and Recreation Facilities Visited

From a list of 33 options, respondents were asked to indicate all of the parks and recreation facilities their household has visited in the past 12 months. The following summarizes key findings:

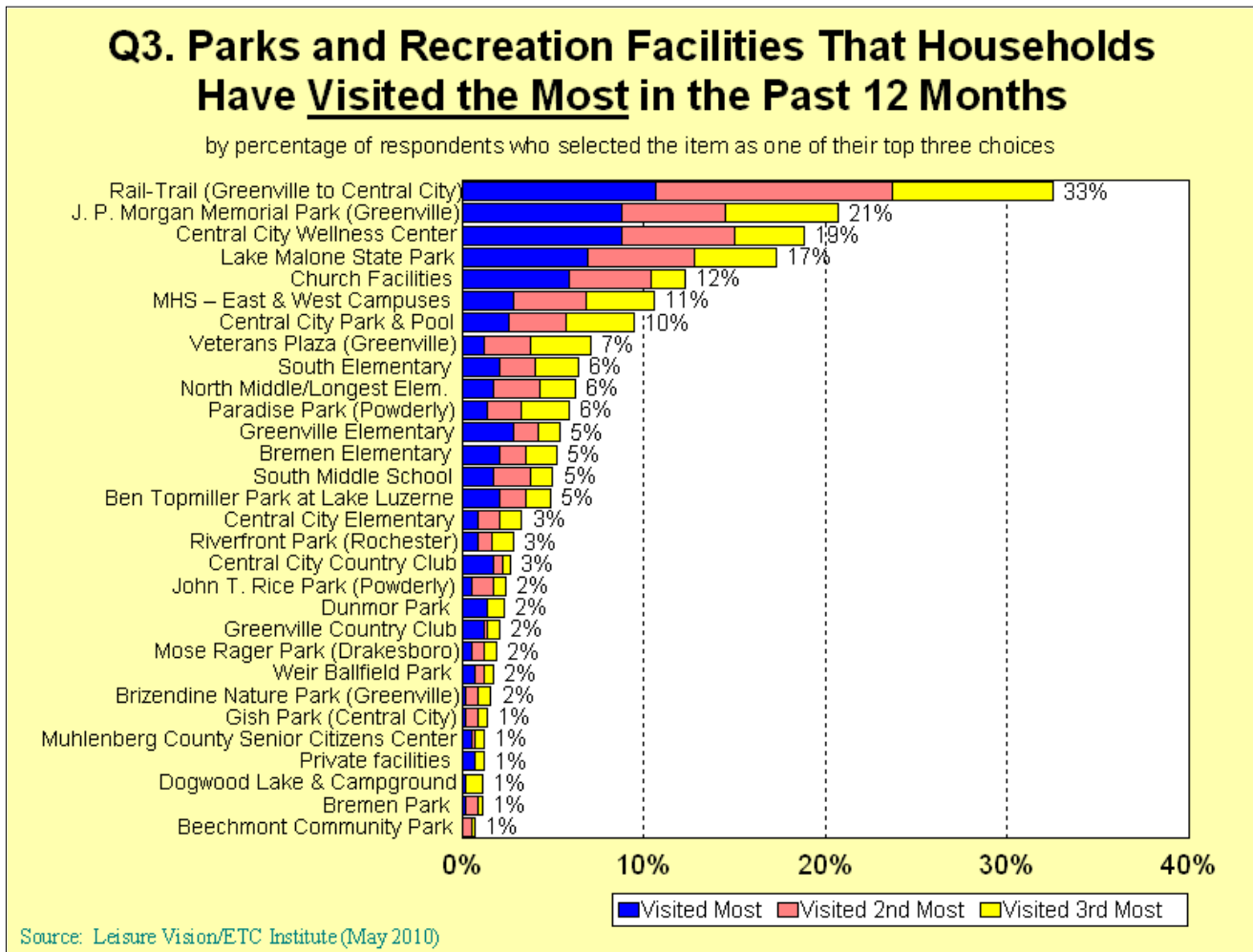
- The parks and recreation facilities that the highest percentage of households have visited during the past 12 months are: Rail-Trail – Greenville to Central City (50%), Lake Malone State Park (39%), J.P. Morgan Memorial Park (36%), Central City Wellness Center (27%), and church facilities (26%).



5. Parks and Recreation Facilities Visited the Most

From a list of 33 options, respondents were asked to select the three parks and recreation facilities their household has visited the most in the past 12 months. The following summarizes key findings:

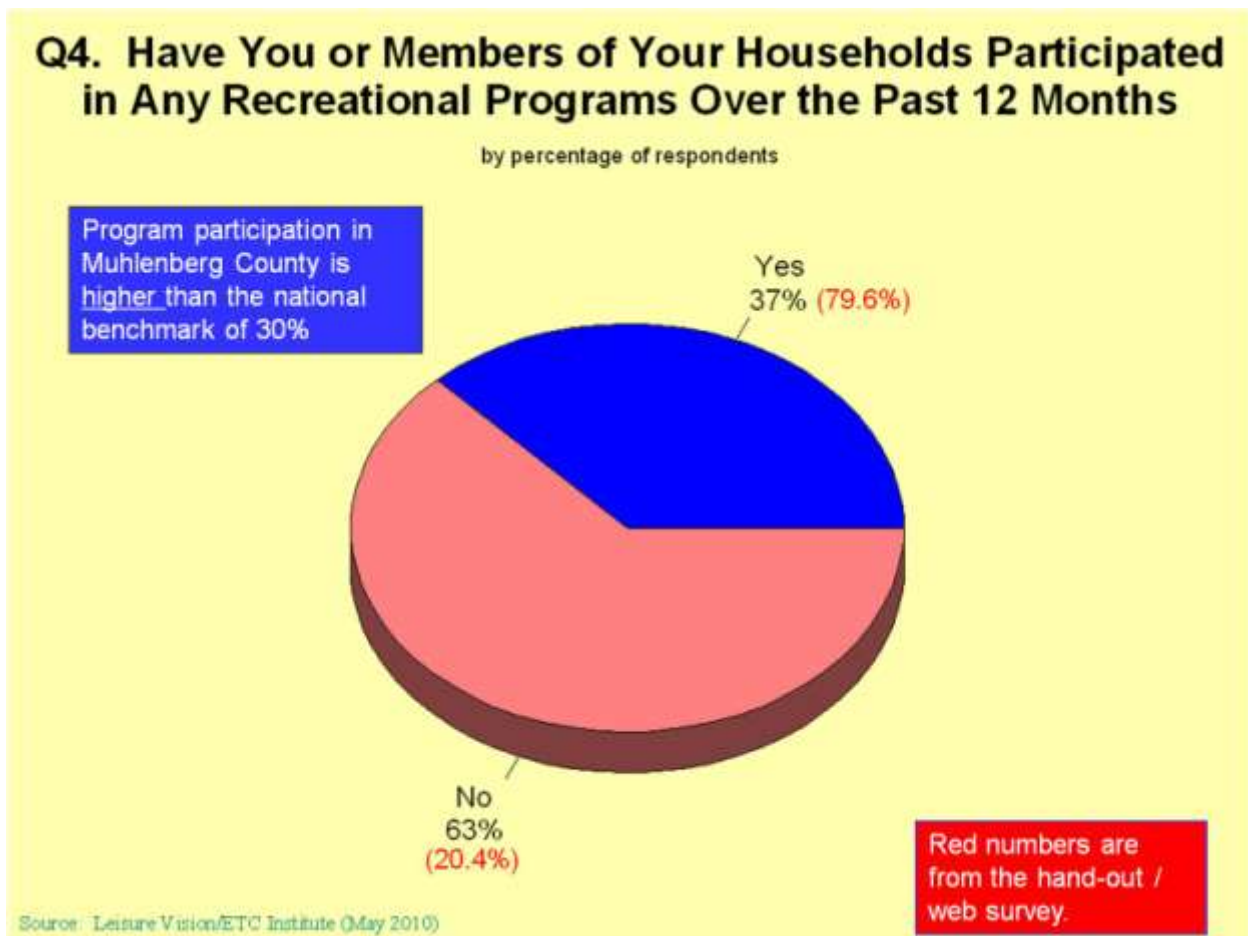
- Based on the sum of their top three choices, the parks and recreation facilities that households have visited the most in the past 12 months are: Rail-Trail – Greenville to Central City (33%), J.P. Morgan Memorial Park (21%), Central City Wellness Center (19%), and Lake Malone State Park (17%). It should also be noted that Rail-Trail – Greenville to Central City had the highest percentage of households select it as their first choice as the parks and recreation facility their household has visited the most in the past 12 months.



6. Participation in Recreation Programs in the Past 12 Months

Respondents were asked to indicate if any members of their household have participated in any recreation programs over the past 12 months. The following summarizes key findings:

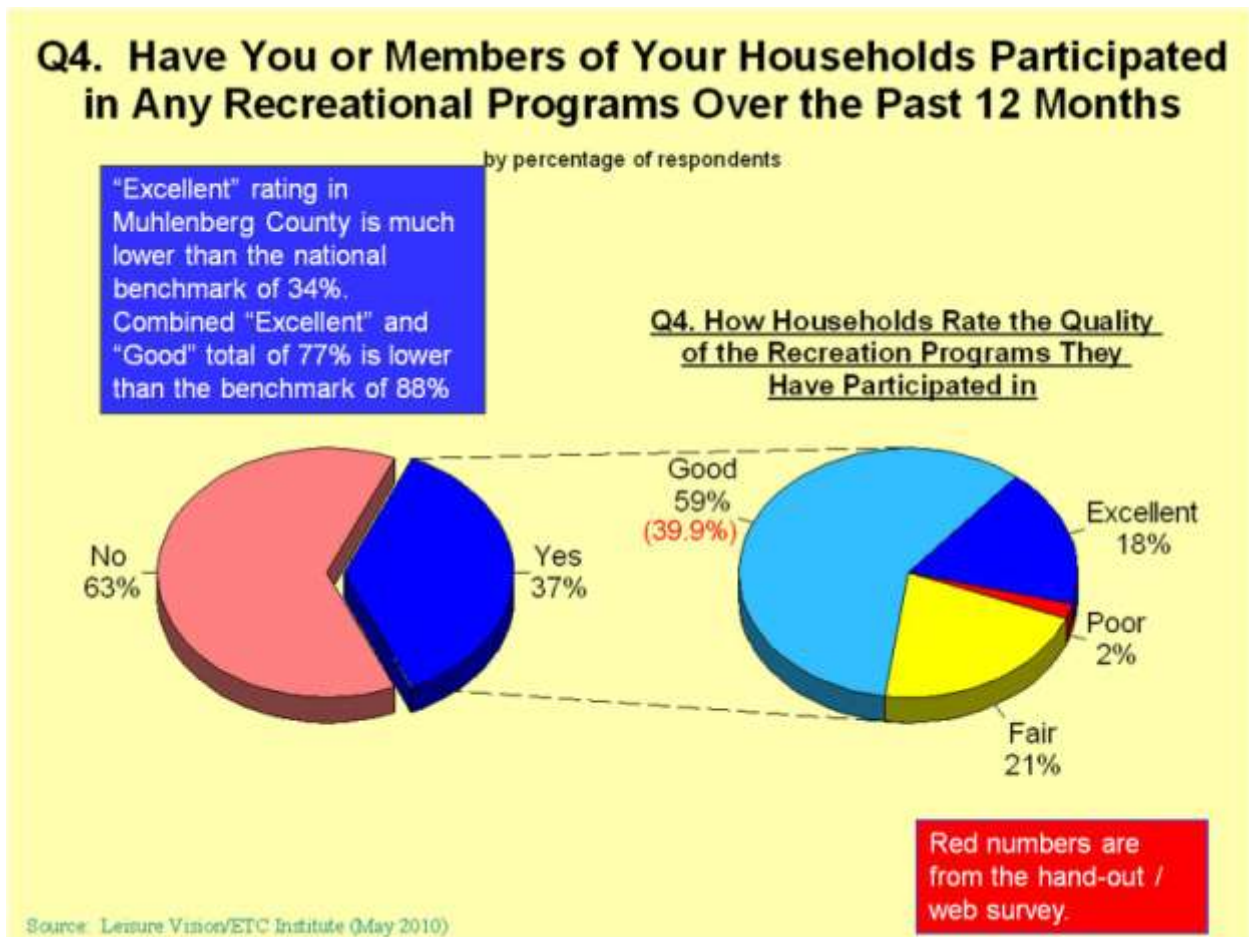
- Thirty-seven percent (37%) of households have participated in recreation programs over the past 12 months.



7. Rating the Quality of Recreation Programs

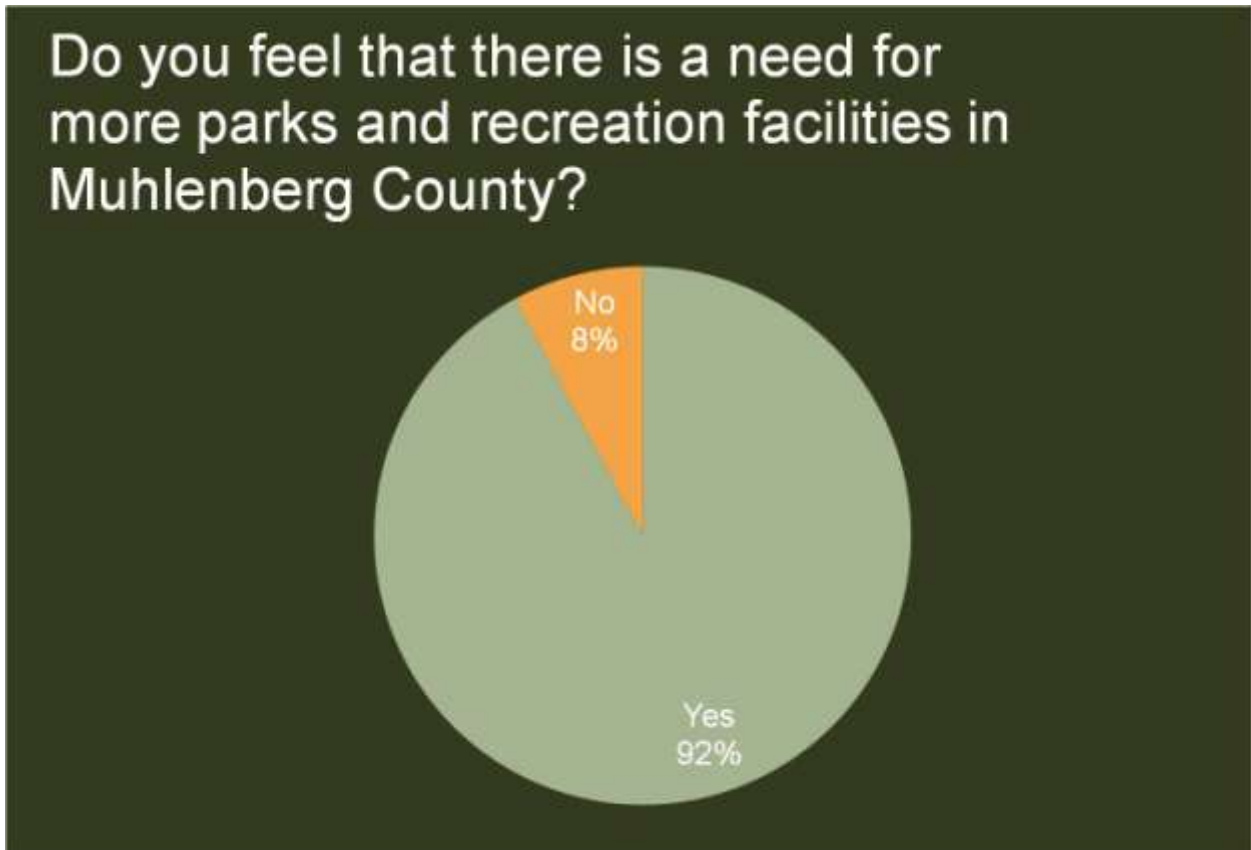
Households that have participated in recreation programs over the past 12 months were asked to rate the quality of the programs they have participated in. The following summarizes key findings:

- Of the 37% of households that have participated in recreation programs over the past 12 months, 77% rated the programs as either excellent (18%) or good (59%). In addition, 21% of households rated the recreation programs as fair and only 2% rated them as poor.



8. Need for More Parks

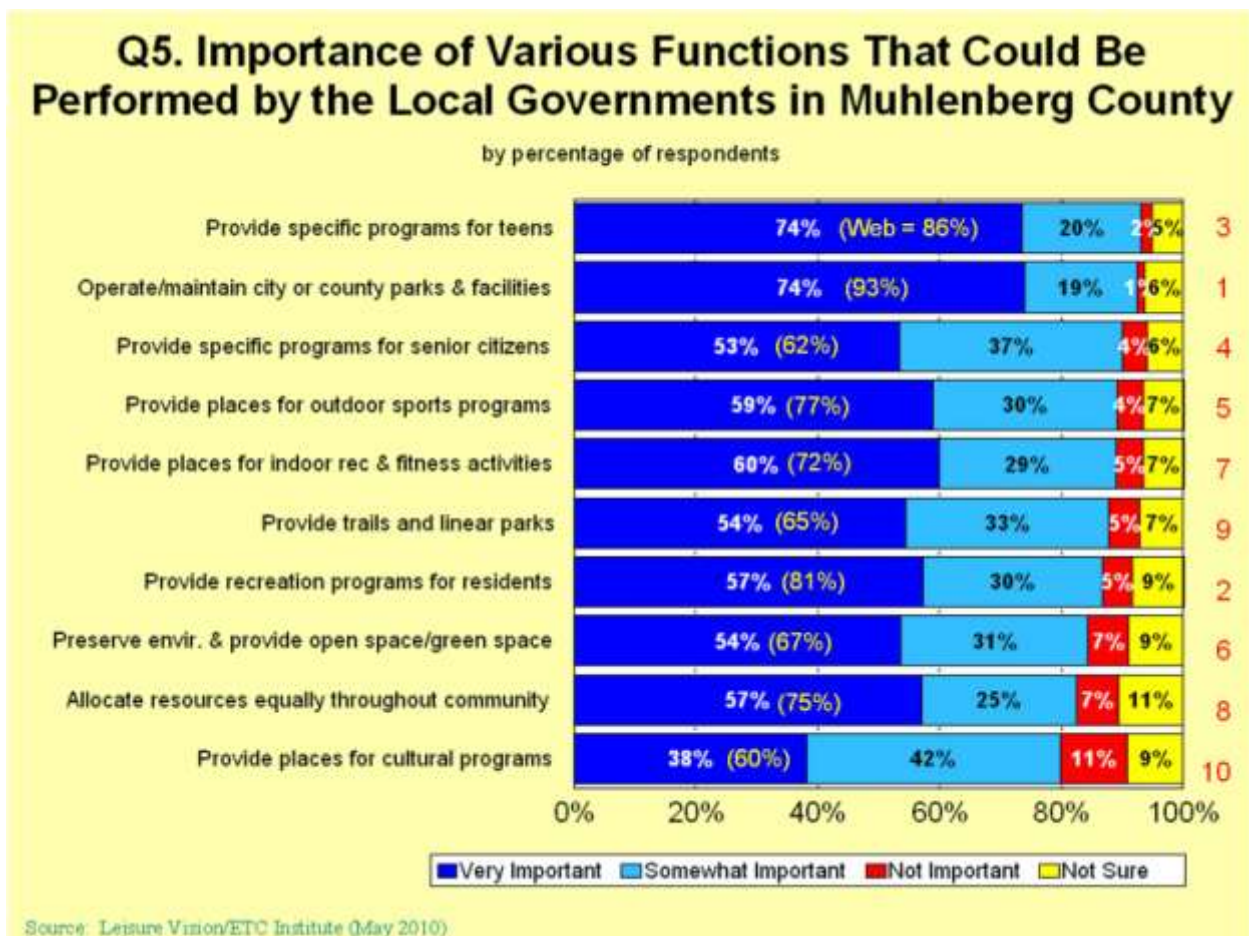
The web survey included a question whether the household felt there is a need for more parks. A total of 92% indicated “yes” which is very strong.



9. Importance of Various Functions That Could Be Performed by Local Governments in Muhlenberg County

From a list of 10 functions that could be performed by local governments in Muhlenberg County, respondents were asked to rate the importance of each function. The following summarizes key findings:

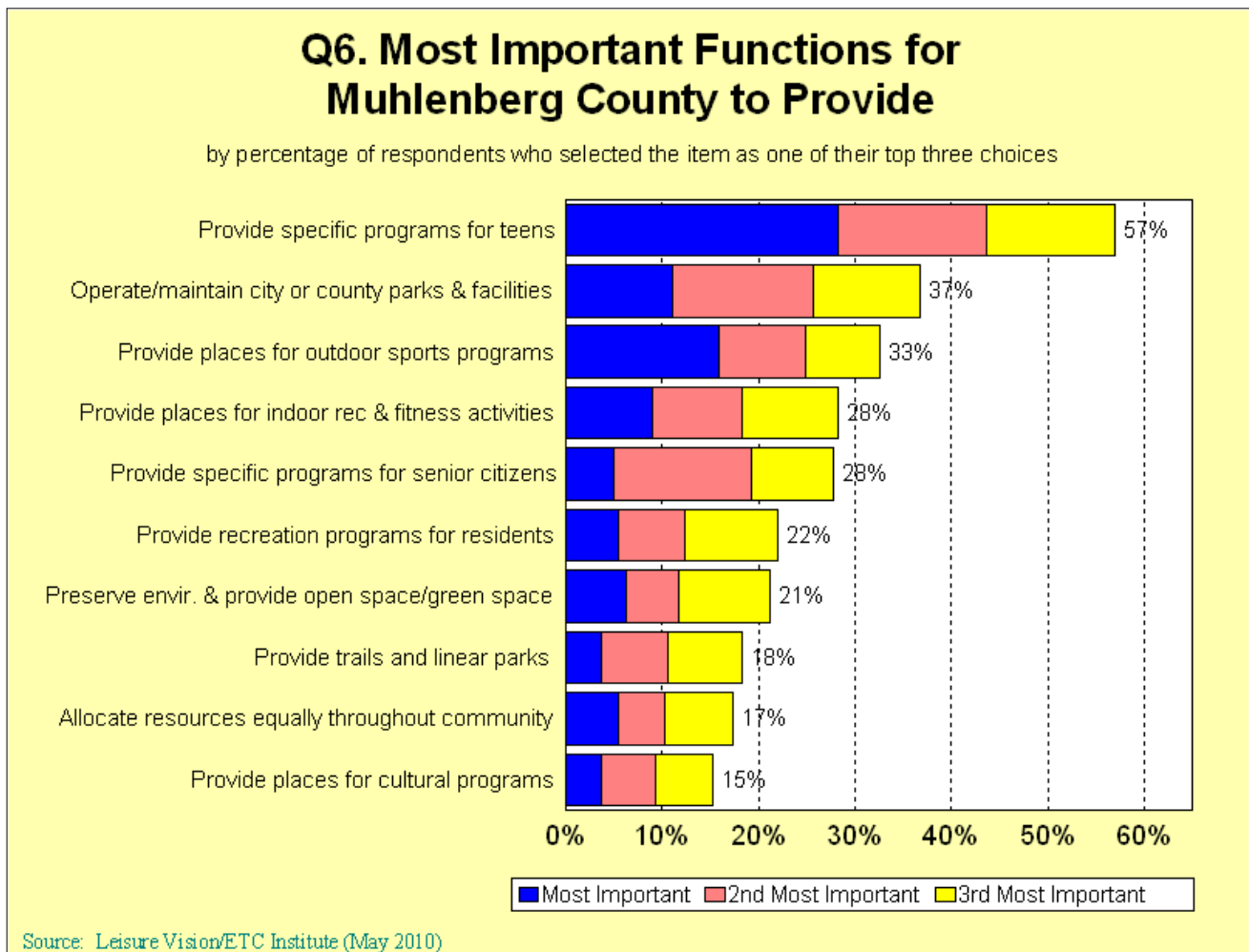
- The functions that the highest percentage of respondents rated as very important or somewhat important are: provide specific programs for teens (94%), operate/maintain city or county parks and facilities (93%), provide specific programs for senior citizens (90%), provide places for outdoor sports programs (89%), and provide places for indoor recreation and fitness activities (89%).



10. Most Important Functions to Provide

From a list of 10 functions that could be performed by local governments in Muhlenberg County, respondents were asked to select the three functions they think should be most important for Muhlenberg to provide. The following summarizes key findings:

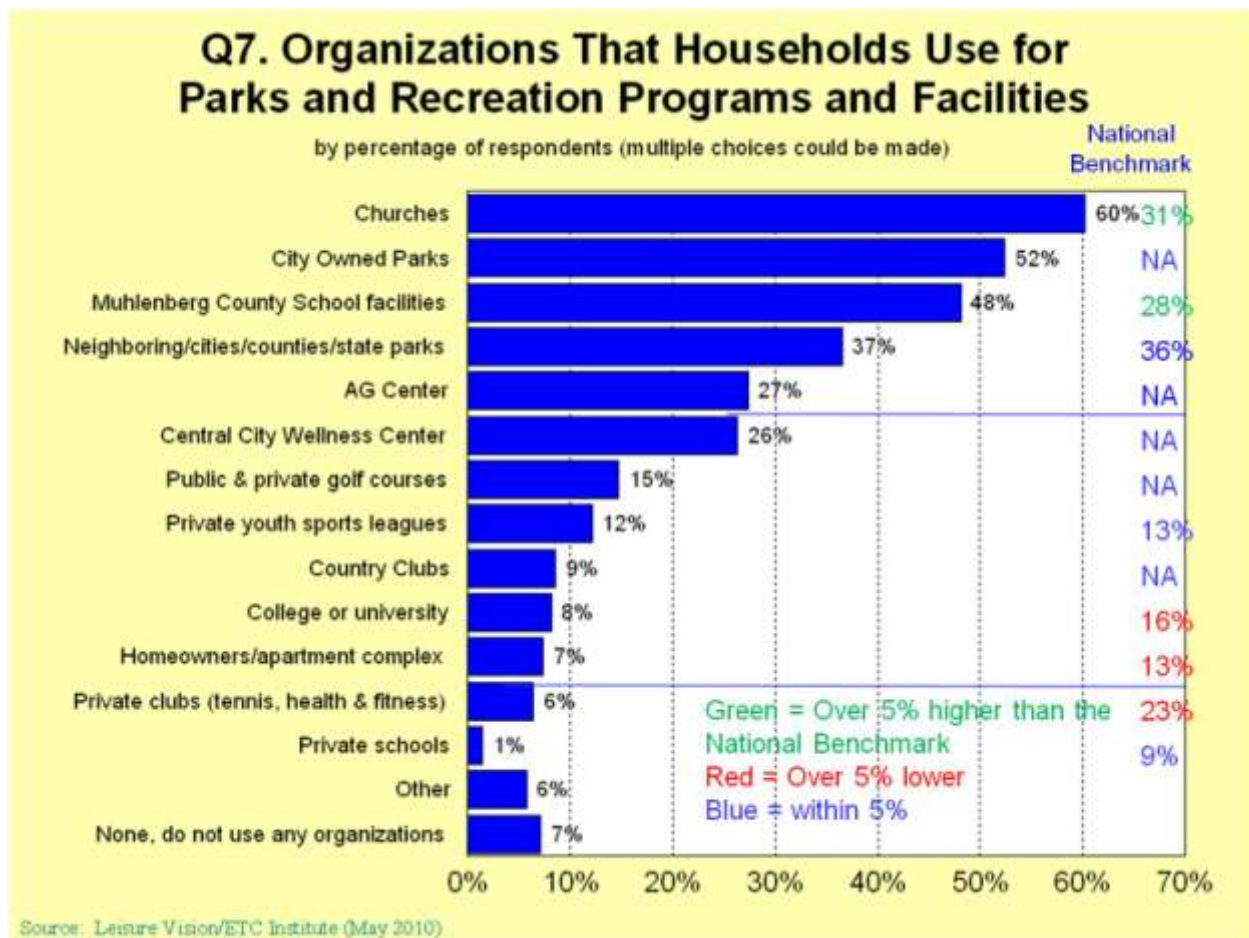
- Based on the sum of their top three choices, the functions that respondents think are most important for Muhlenberg County to provide are: provide specific programs for teens (57%), operate/maintain city or county parks and facilities (37%), and provide places for outdoor sports programs (33%). It should also be noted that providing specific programs for teens had the highest percentage of respondents select it as their first choice as the function their household thinks is most important for Muhlenberg County to provide.



11. Organizations Used for Parks and Recreation Programs and Facilities

From a list of 13 options, respondents were asked to indicate all of the organizations their household uses for parks and recreation programs and facilities. The following summarizes key findings:

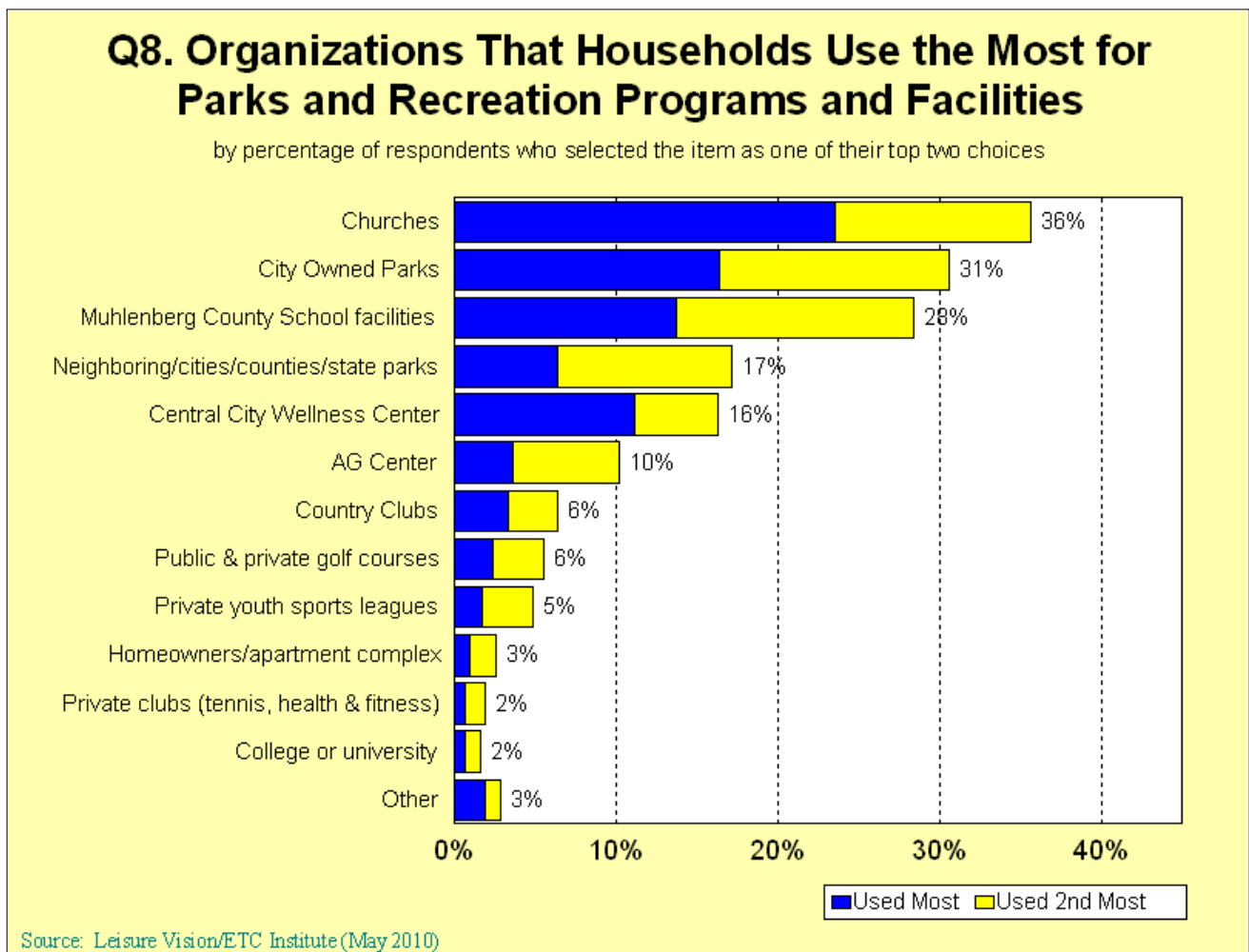
- The organizations used by the highest percentage of households for parks and recreation programs and facilities are: churches (60%), city owned parks (52%), Muhlenberg County school facilities (48%), and neighboring cities/counties/state parks (37%).



12. Organizations Used the Most for Parks and Recreation Programs and Facilities

From a list of 13 options, respondents were asked to select the two organizations their household uses the most for parks and recreation programs and facilities. The following summarizes key findings:

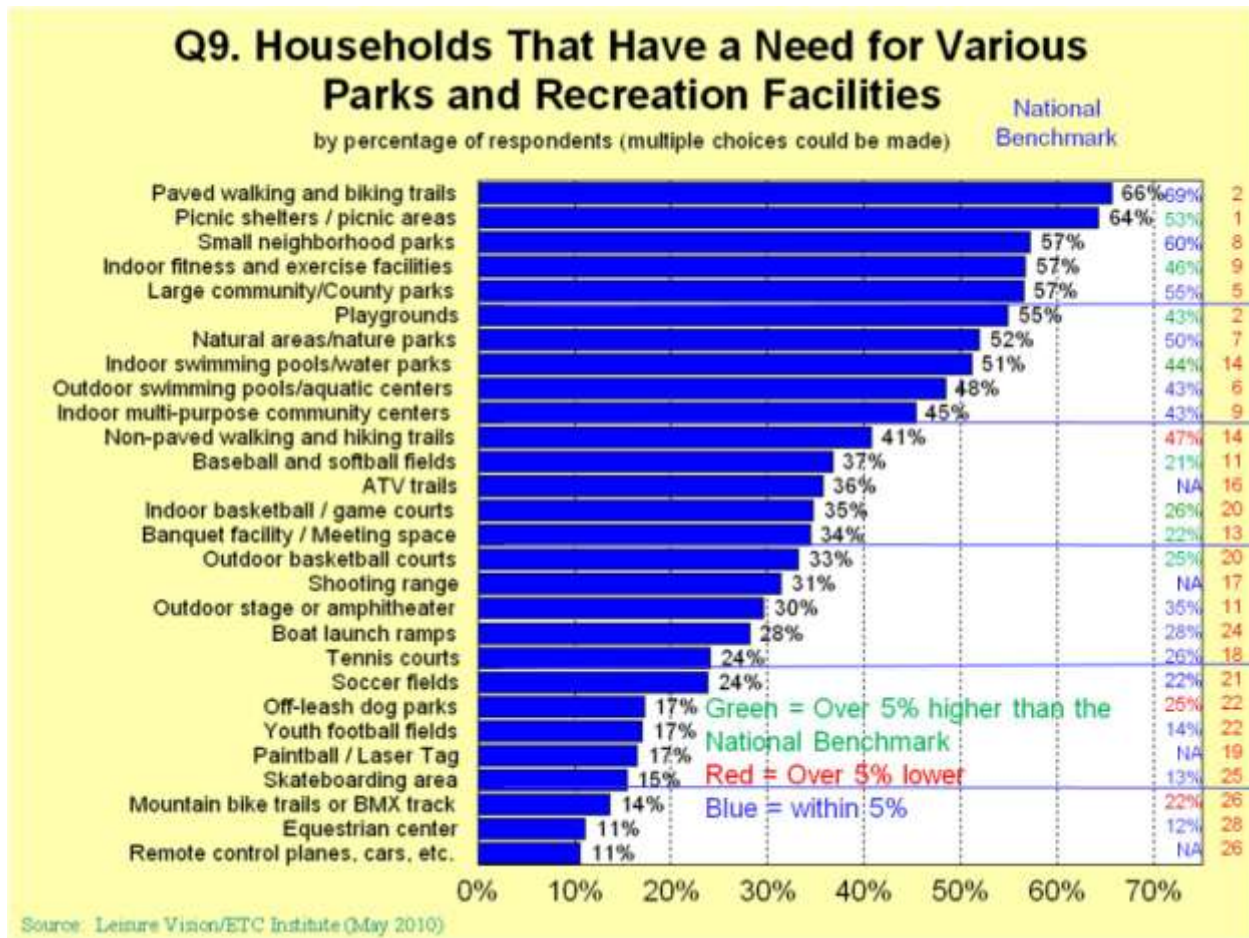
- Based on the sum of their top two choices, the organizations that households use the most for parks and recreation programs and facilities are: churches (36%), city owned parks (31%), and Muhlenberg County school facilities (28%). It should also be noted that churches had the highest percentage of respondents select it as their first choice as the organization their household uses the most for parks and recreation programs and facilities.



13. Need for Recreation Parks and Facilities

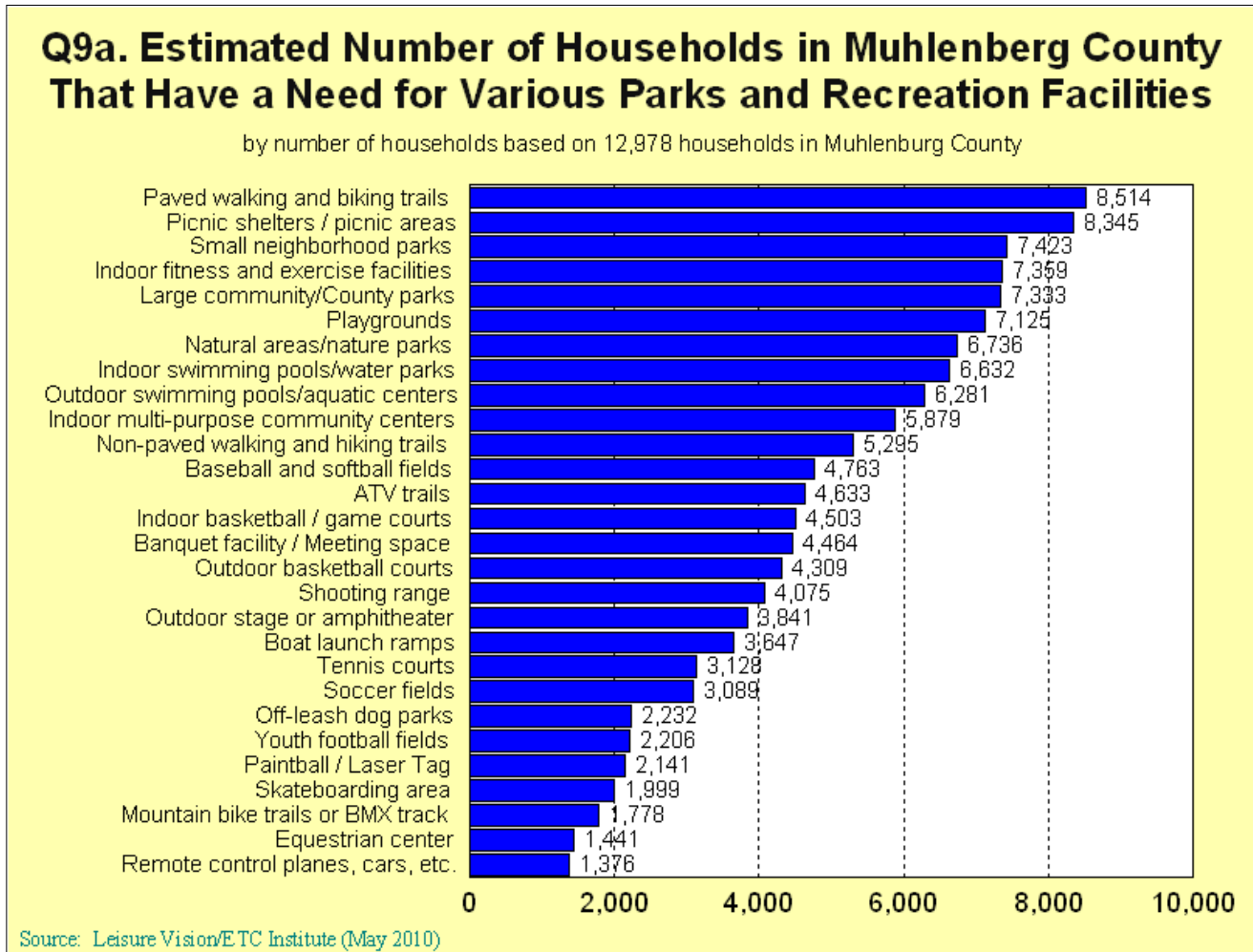
From a list of 28 parks and recreation facilities, respondents were asked to indicate all of the ones their household has a need. The following summarizes key findings:

- There are eight parks/facilities that over 50% of households have a need for: paved walking and biking trails (66%), picnic shelters/picnic areas (64%), small neighborhood parks (57%), indoor fitness and exercise facilities (57%), large community/County parks (57%), playgrounds (55%), natural areas/nature parks (52%), and indoor swimming pools/water parks (51%).



14. Need For Parks and Recreation Facilities in Muhlenberg County

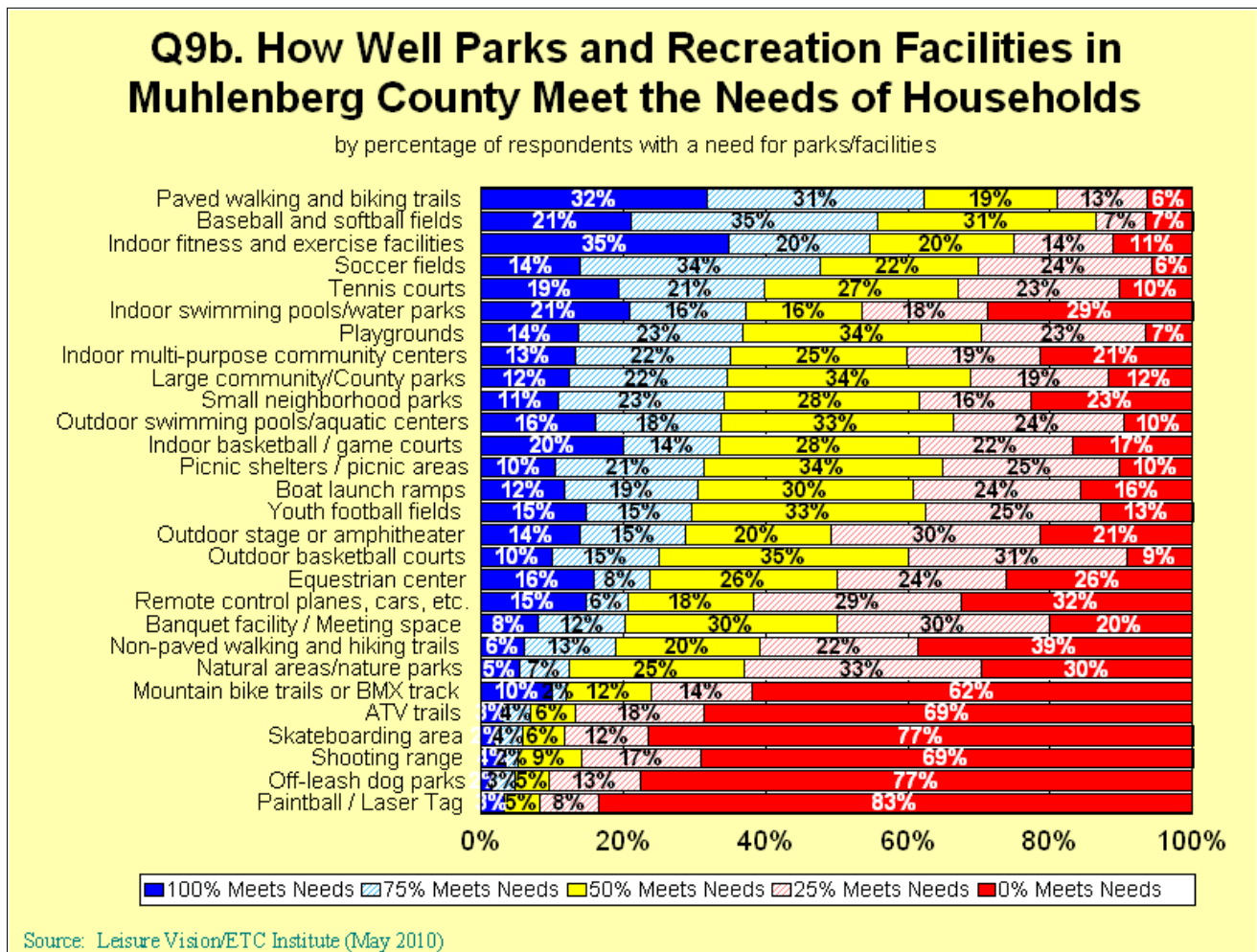
From a list of 28 parks and recreation facilities, respondents were asked to indicate all of the ones their household has a need. The graph below shows the estimated number of households in Muhlenberg County that have a need for various parks and recreation facilities, based on 12,978 households in the County.



15. How Well Parks and Recreation Facilities Meet Needs

From a list of 28 parks and recreation facilities, households that have a need for parks/facilities were asked to indicate how well these types of parks/facilities in Muhlenberg County meet their needs. The following summarizes key findings:

- For all 28 parks and facilities, less than 40% of respondents indicated that the park/facility completely meets the needs of their household.

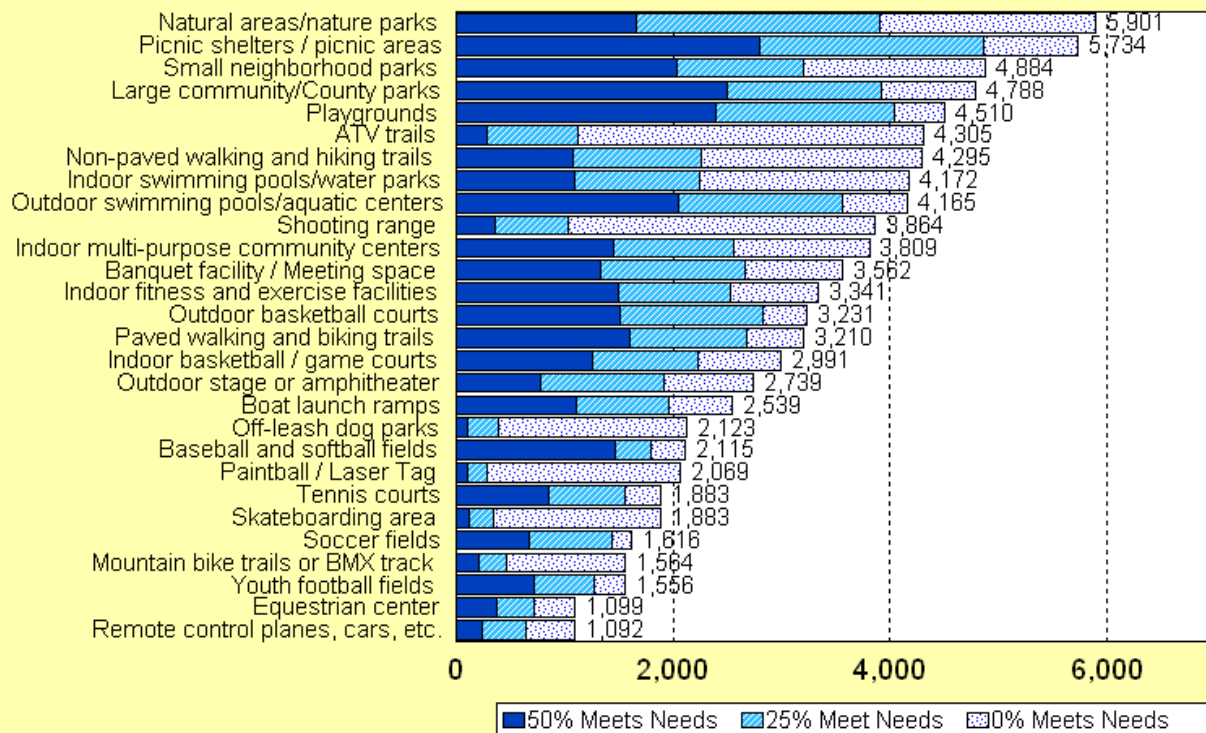


16. Muhlenberg County Households with Facility Needs Being 50% Met or Less

From a list of 28 parks and recreation facilities, households that have a need for parks/facilities were asked to indicate how well these types of parks/facilities in Muhlenberg County meet their needs. The graph below shows the estimated number of households in Muhlenberg County whose needs for parks/facilities are only being 50% met or less, based on 12,978 households in the County.

Q9c. Estimated Number of Households in Muhlenberg County Whose Needs for Parks and Recreation Facilities Are Only Being 50% Met or Less

by number of households based on 12,978 households in Muhlenberg County

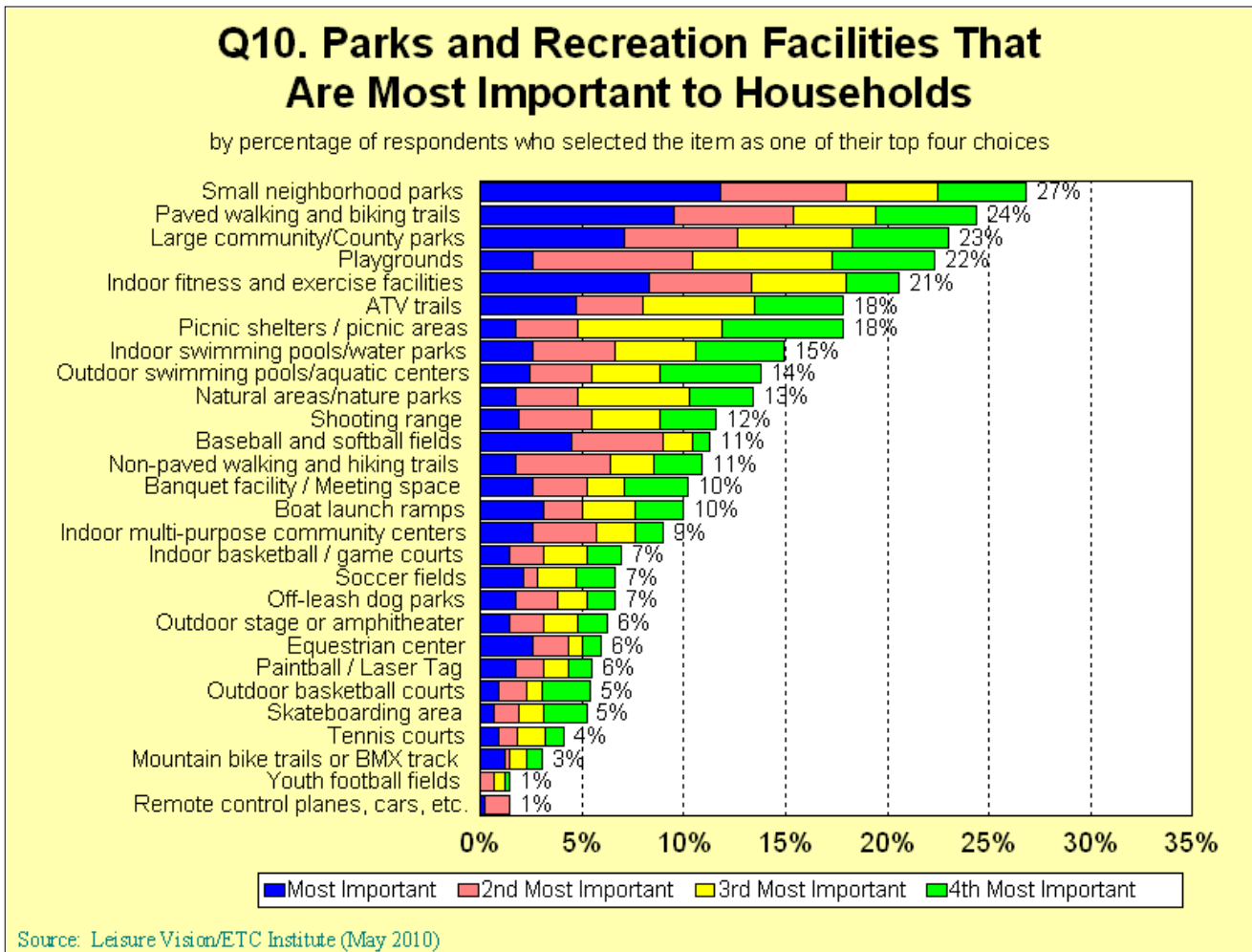


Source: Leisure Vision/ETC Institute (May 2010)

17. Most Important Parks and Recreation Facilities

From a list of 28 parks and recreation facilities, respondents were asked to select the four parks/facilities that are most important to their household. The following summarizes key findings:

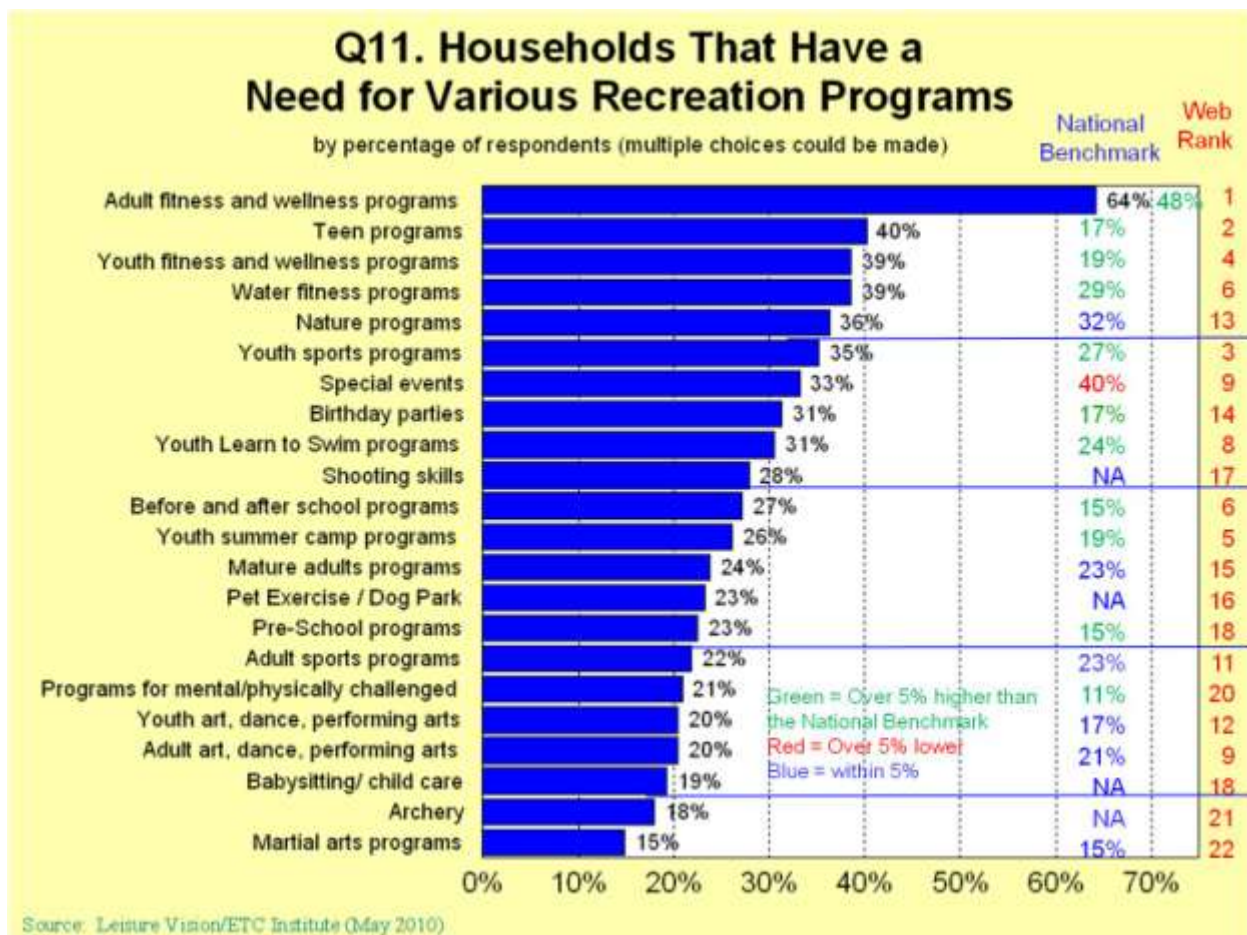
- Based on the sum of their top four choices, the parks and facilities that are most important to households are: small neighborhood parks (27%), paved walking and biking trails (24%), large community/County parks (23%), playgrounds (22%), and indoor fitness and exercise facilities (21%). It should also be noted that small neighborhood parks had the highest percentage of respondents select it as their first choice as the park/facility that is most important to their household.



18. Need for Recreation Programs

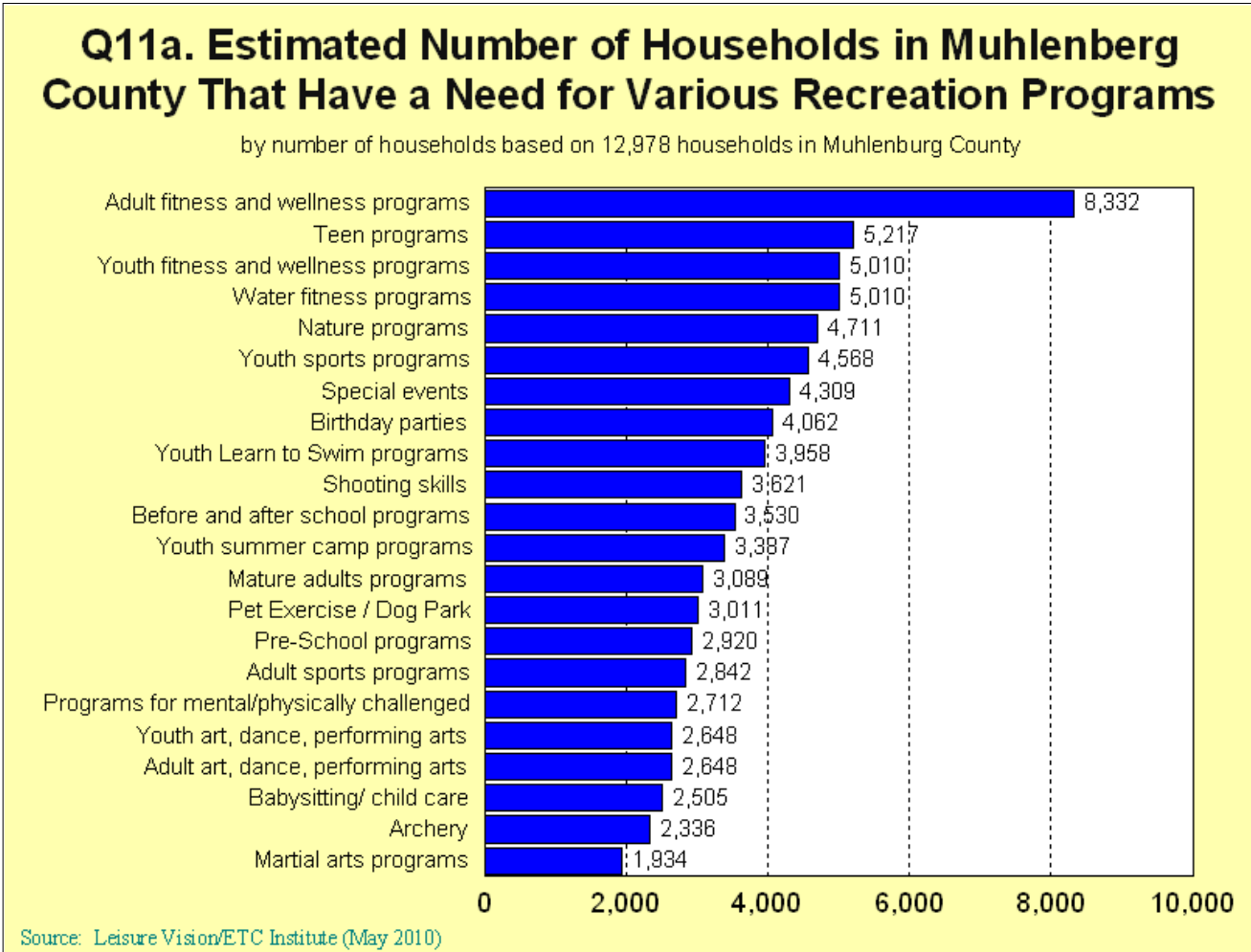
From a list of 22 recreation programs, respondents were asked to indicate all of the ones their household has a need. The following summarizes key findings:

- The recreation programs that the highest percentage of households have a need for are: adult fitness and wellness programs (64%), teen programs (40%), youth fitness and wellness programs (39%), and water fitness programs (39%).



19. Need for Recreation Programs in Muhlenberg County

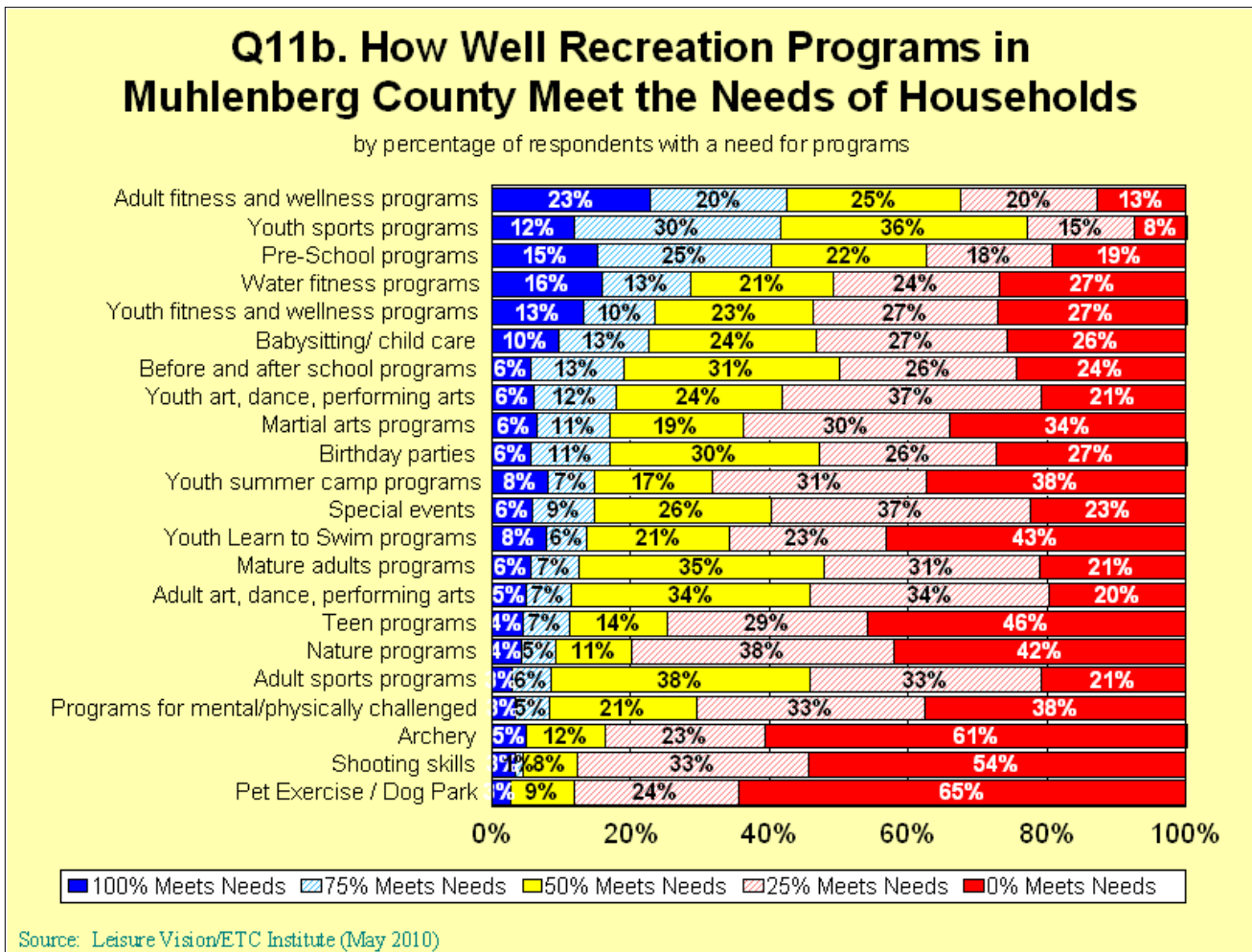
From a list of 22 recreation programs, respondents were asked to indicate all of the ones their household has a need. The graph below shows the estimated number of households in Muhlenberg County that have a need for recreation programs, based on 12,978 households in the County.



20. How Well Recreation Programs Meet Needs

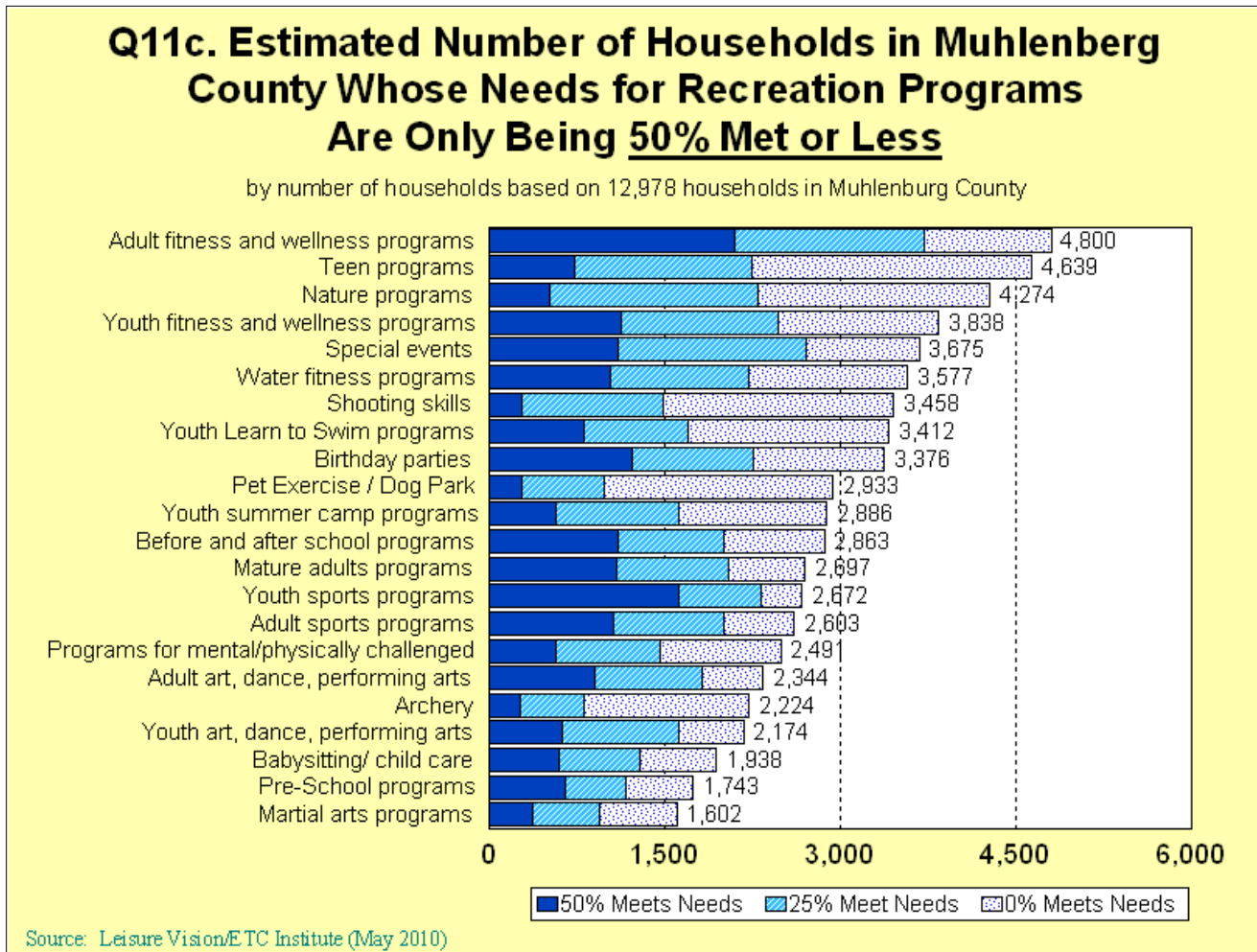
From a list of 22 recreation programs, households that have a need for programs were asked to indicate how well these types of programs in Muhlenberg County meet their needs. The following summarizes key findings:

- For all 22 programs, less than 25% of respondents indicated that the program completely meets the needs of their household.



21. Muhlenberg County Households with Program Needs Being 50% Met or Less

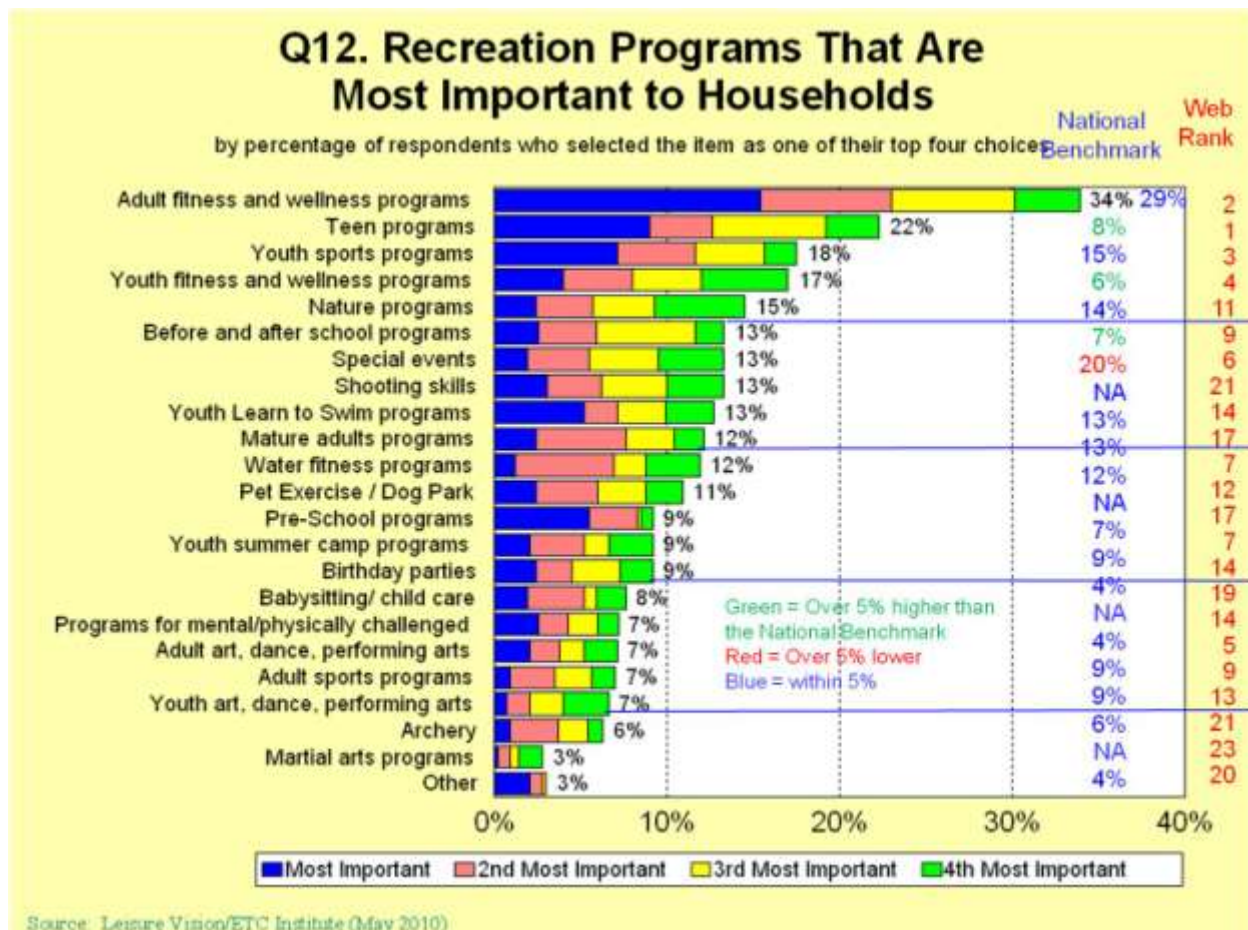
From a list of 22 recreation programs, households that have a need for programs were asked to indicate how well these types of programs in Muhlenberg County meet their needs. The graph below shows the estimated number of households in Muhlenberg County whose needs for programs are only being 50% met or less, based on 12,978 households in the County.



22. Most Important Recreation Programs

From a list of 22 recreation programs, respondents were asked to select the four that are most important to their household. The following summarizes key findings:

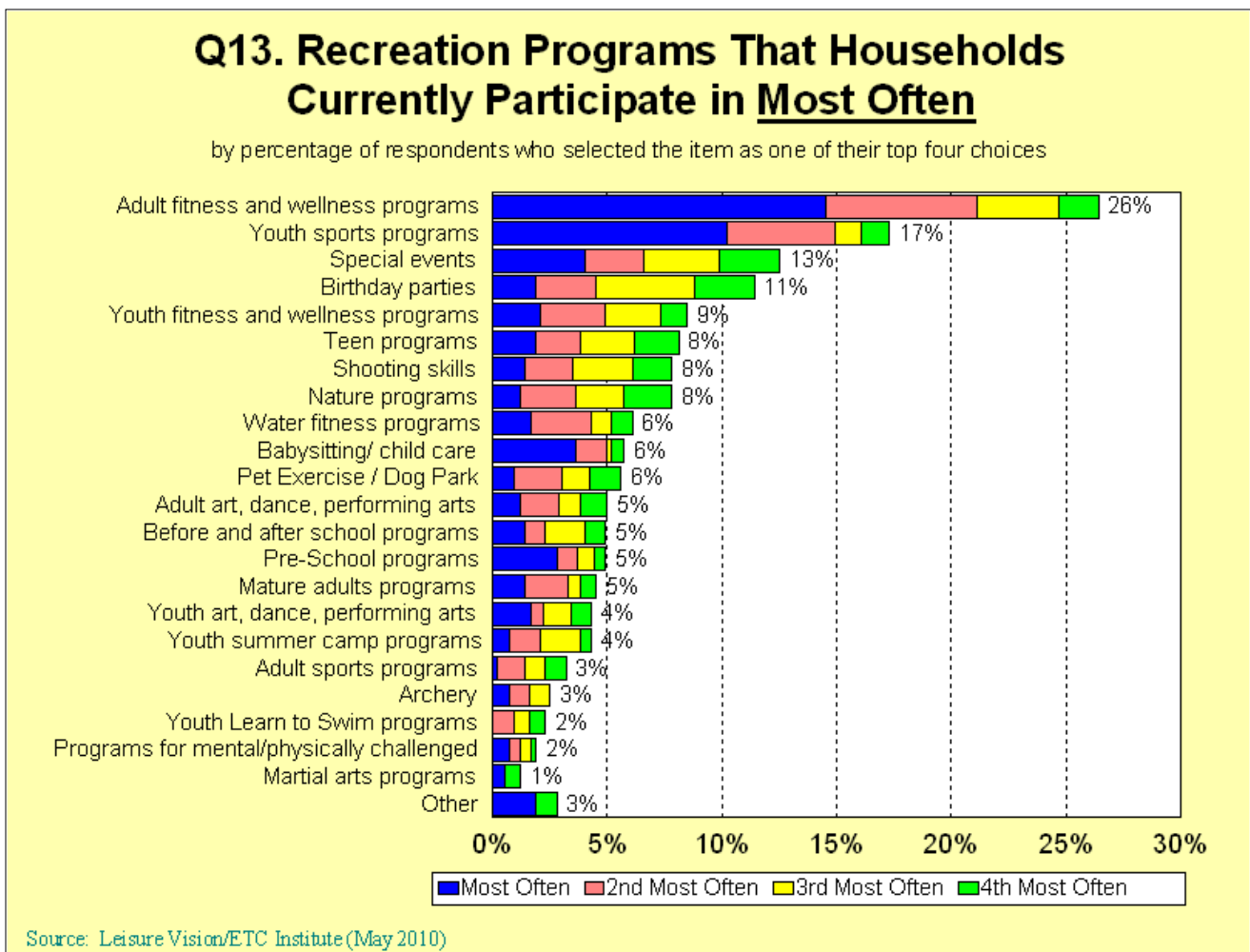
- Based on the sum of their top four choices, the recreation programs that are most important to households are: adult fitness and wellness programs (34%), teen programs (22%), youth sports programs (18%), and youth fitness and wellness programs (17%). It should also be noted that adult fitness and wellness programs had the highest percentage of respondents select it as their first choice as the program that is most important to their household.



23. Recreation Programs Currently Participated in Most Often

From a list of 22 recreation programs, respondents were asked to select the four that their household currently participates in most often. The following summarizes key findings:

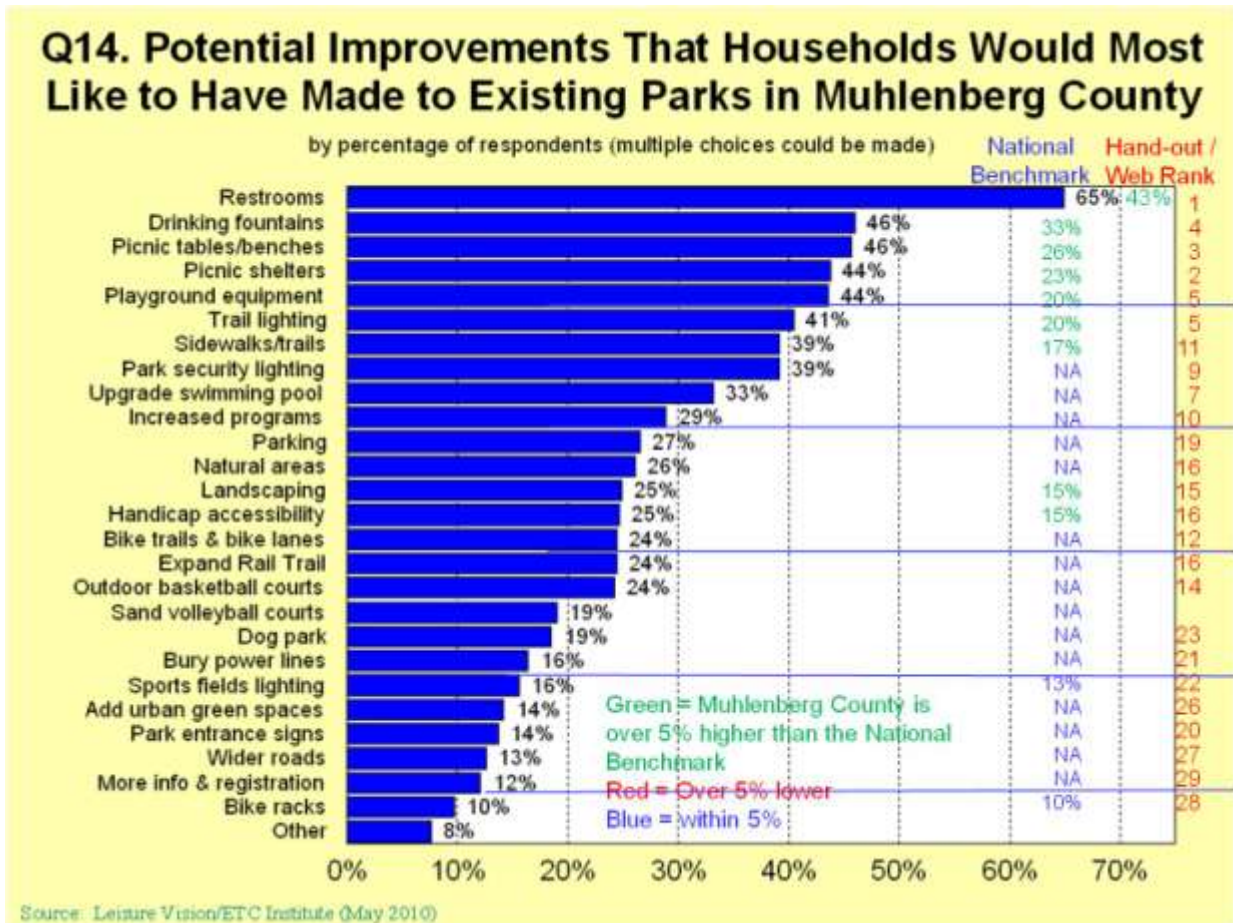
- Based on the sum of their top four choices, the programs that households currently participate in most often are: adult fitness and wellness programs (26%), youth sports programs (17%), special events (13%), and birthday parties (11%). It should also be noted that adult fitness and wellness programs had the highest percentage of respondents select it as their first choice as the program their household participates in most often.



24. Improvements to Make to Parks in Muhlenberg County

From a list of 26 improvements that could be made to existing parks in Muhlenberg County, respondents were asked to indicate all the improvements they would most like to have made to the parks. The following summarizes key findings:

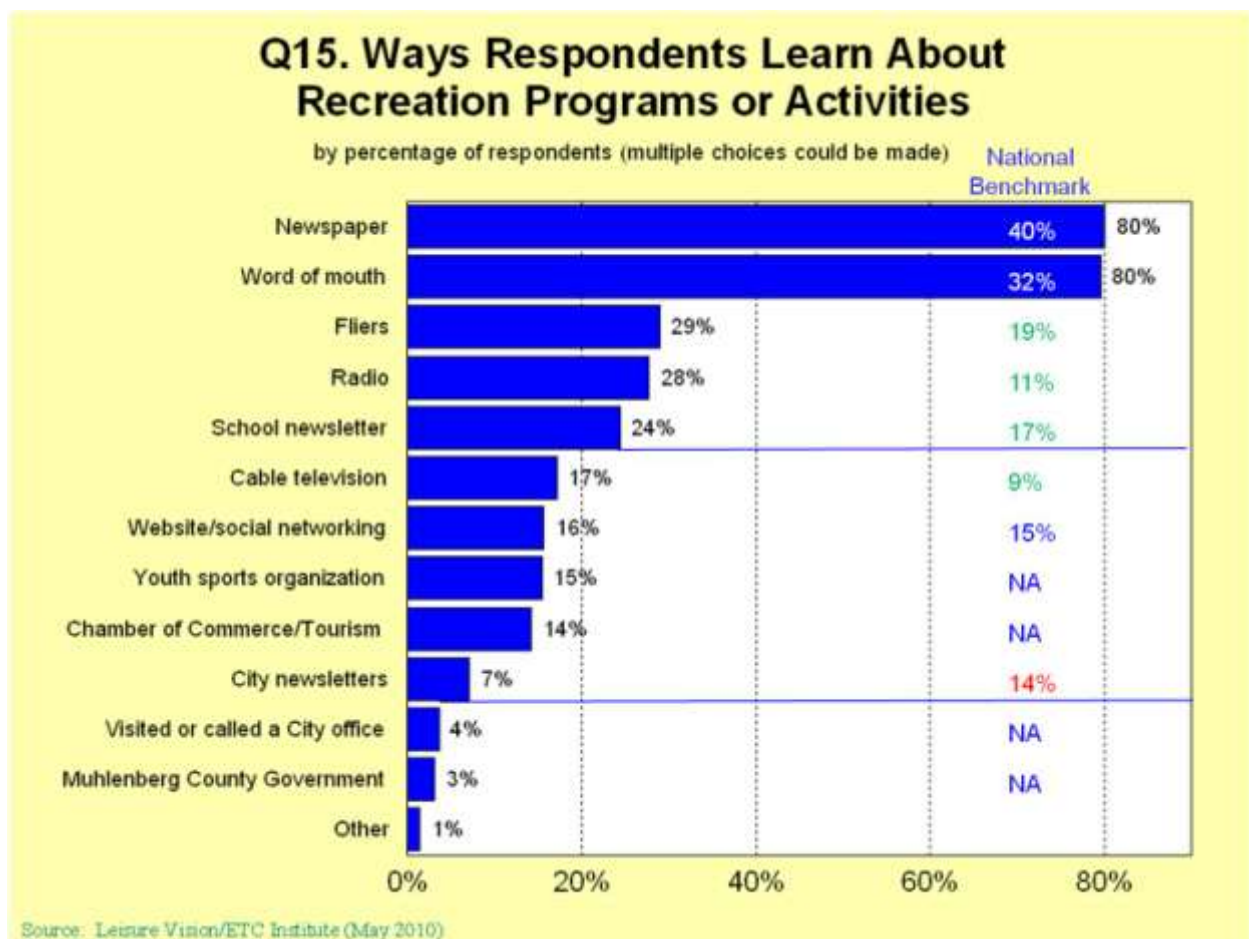
- Sixty-five percent (65%) of households would like to improve restrooms at parks in Muhlenberg County. The other most frequently mentioned improvements that households would like to make to parks are: drinking fountains (46%), picnic tables/benches (46%), picnic shelters (44%), playground equipment (44%), and trail lighting (41%).



25. Ways Respondents Learn About Recreation Programs and Activities

From a list of 12 options, respondents were asked to indicate all the ways they learn about recreation programs and activities. The following summarizes key findings:

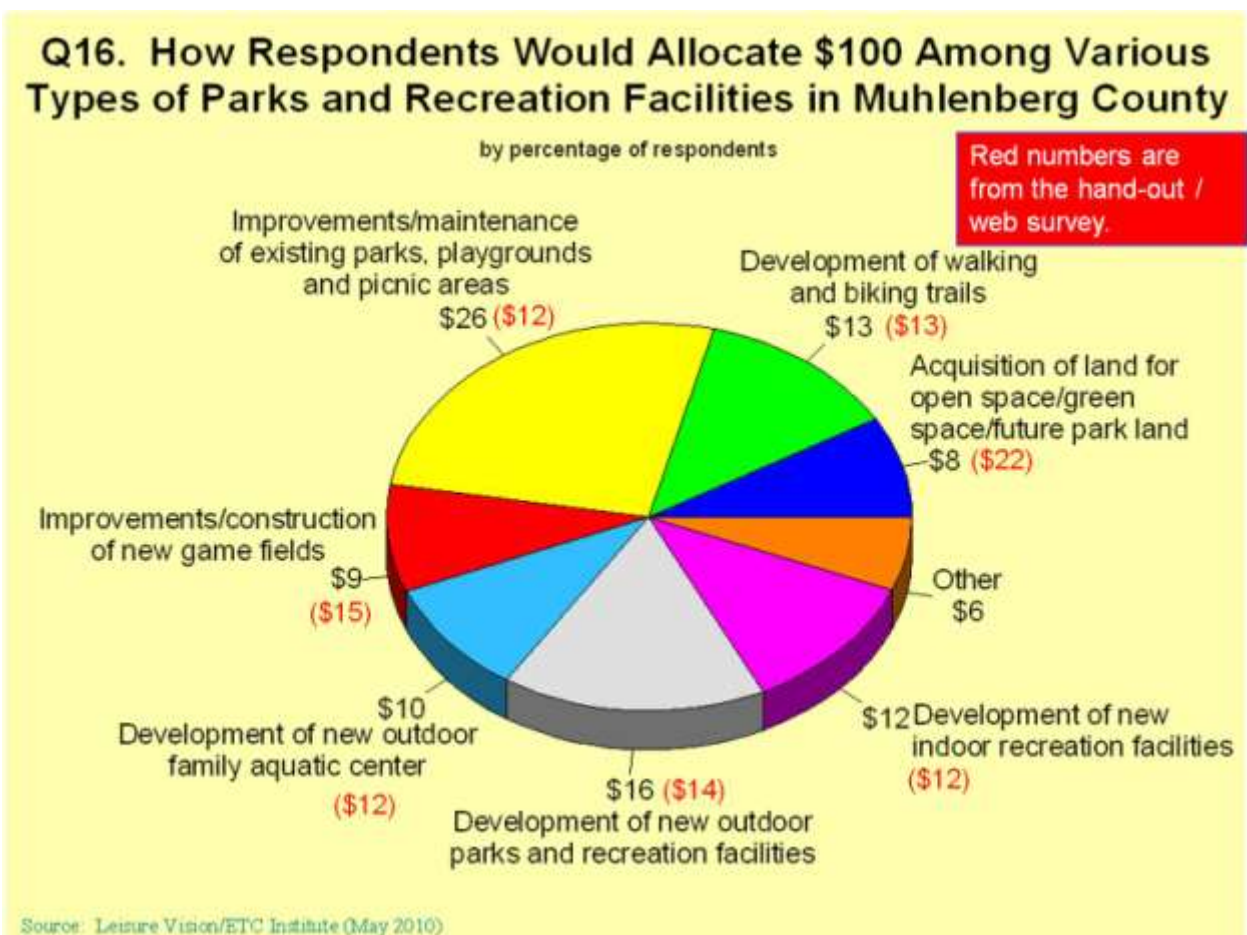
- The newspaper (80%) and word of mouth (80%) are the most frequently mentioned ways respondents learn about recreation programs and activities.



26. Allocation of \$100 Among Parks & Recreation Facilities in Muhlenberg County

Respondents were asked how they would allocate \$100 among various types of parks and recreation facilities in Muhlenberg County. The following summarizes key findings:

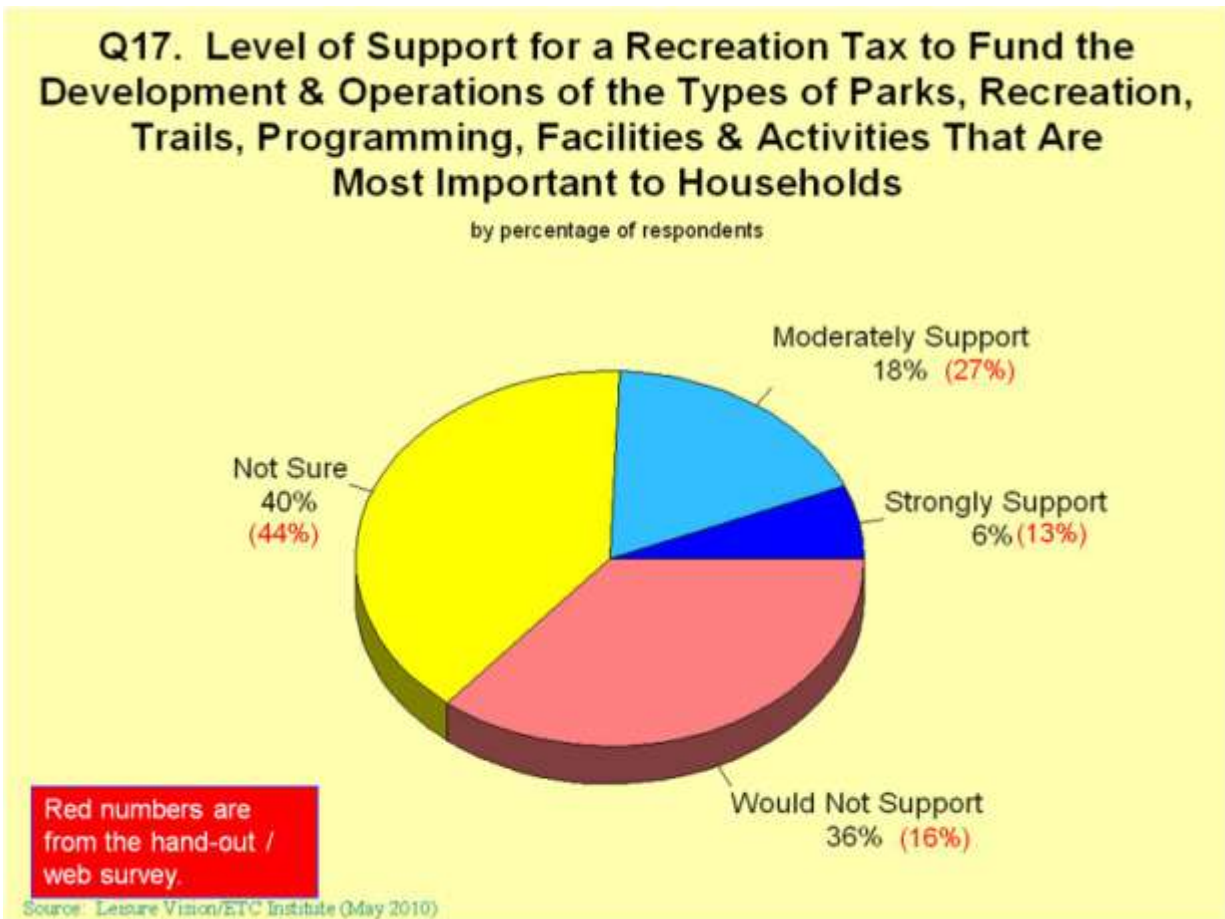
- Improvements/maintenance of existing parks, playgrounds and picnic areas (\$26) is the type of parks and recreation facility that respondents would allocate the most money. The remaining \$74 was allocated as follows: development of new outdoor parks and recreation facilities (\$16), development of walking and biking trails (\$13), development of new indoor recreation facilities (\$12), development of new outdoor family aquatic center (\$10), improvements/construction of new game fields (\$9), acquisition of land for open space/green space/future park land (\$8), and “other” (\$6).



27. Level of Support for a Recreation Tax to Fund Parks and Recreation

Respondents were asked to indicate their level of support for a recreation tax to fund the development and operations of the types of parks, recreation, trails, programming and facilities that are most important to their household. The following summarizes key findings:

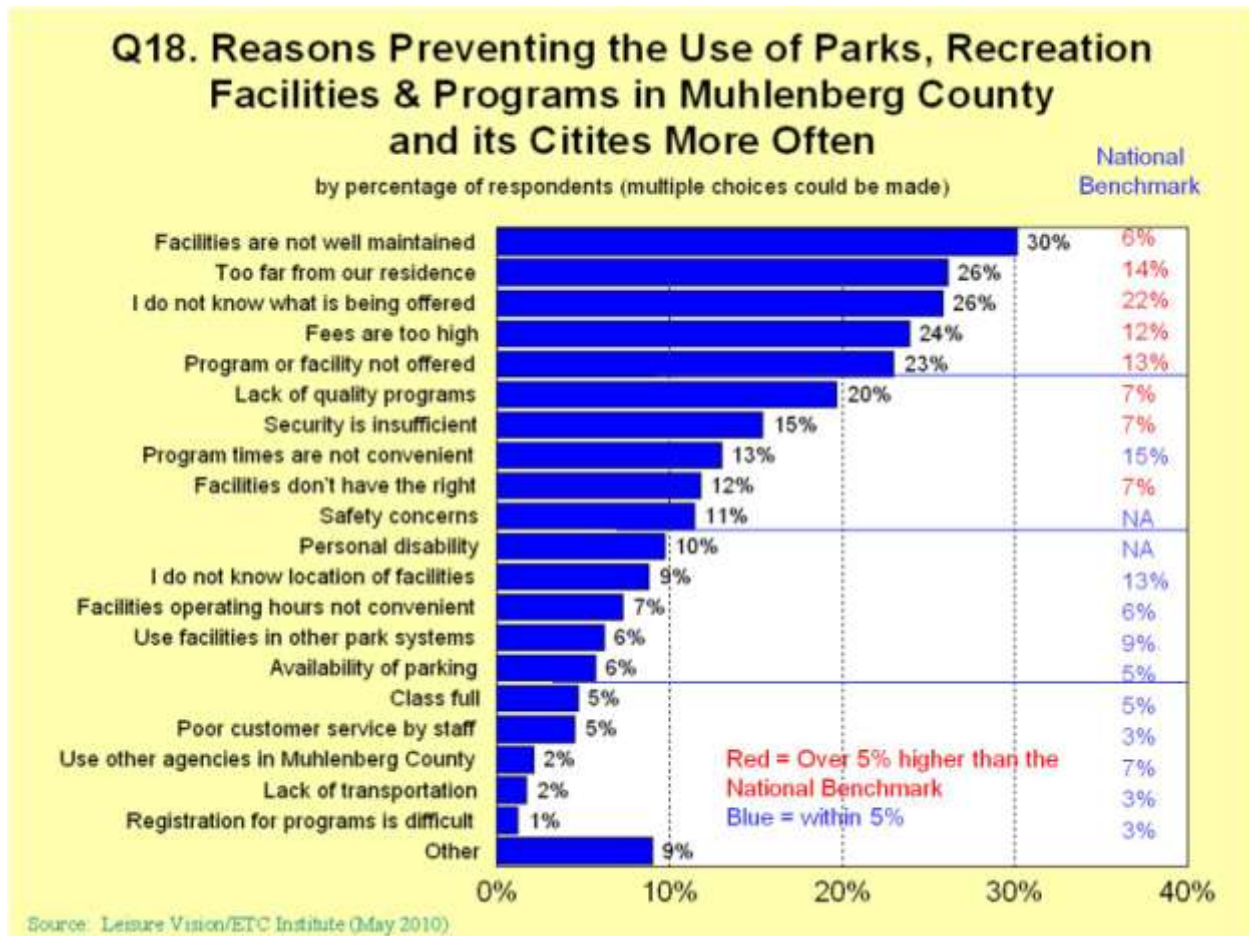
- Forty percent (40%) of households are not sure if they would support a recreation tax to fund the development and operations of the types of parks, recreation, trails, programming and facilities that are most important to their household. Thirty-six percent (36%) of households would not support the recreation tax, and 24% of households either strongly support or moderately support the recreation tax.



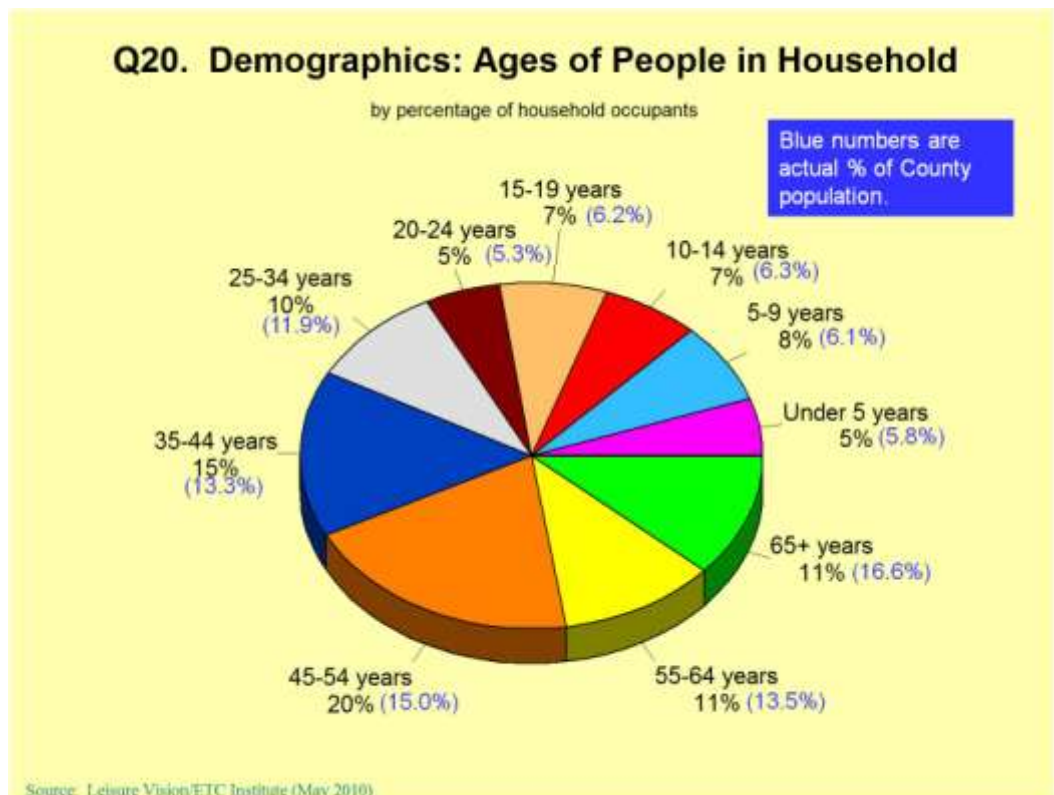
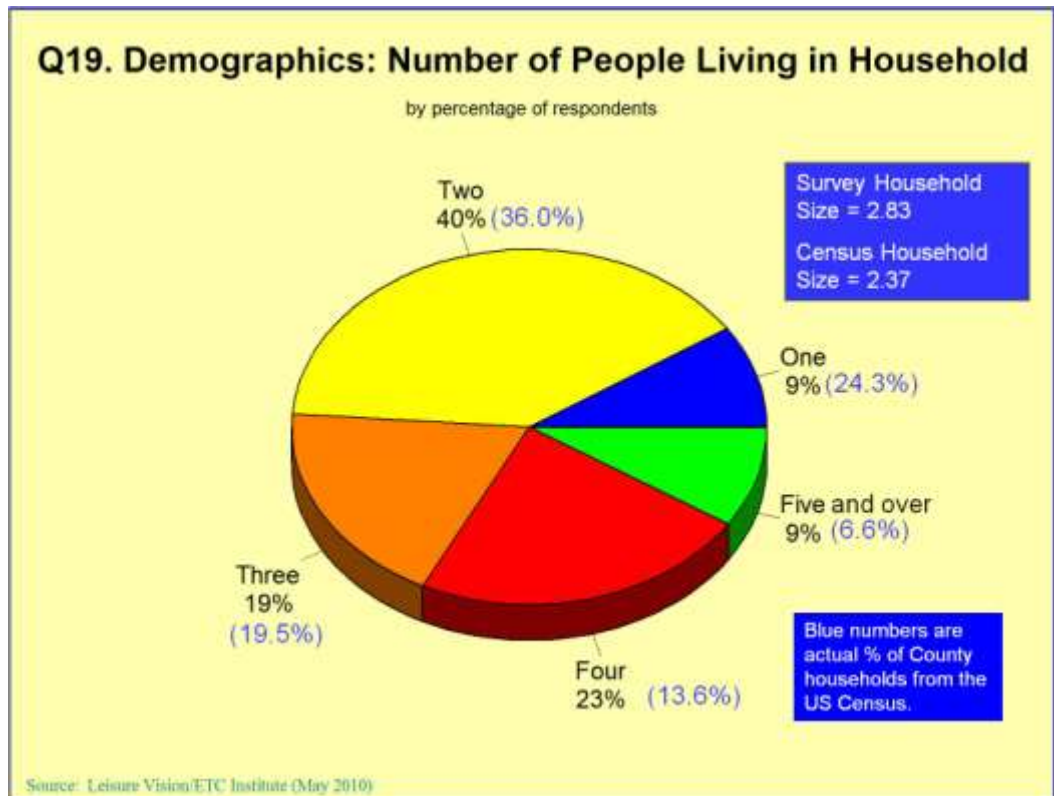
28. Reasons Preventing Households From Using Parks, Recreation Facilities and Programs More Often

From a list of 20 options, respondents were asked to indicate all the reasons preventing their household from using parks, recreation facilities and programs of Muhlenberg County and their cities more often. The following summarizes key findings:

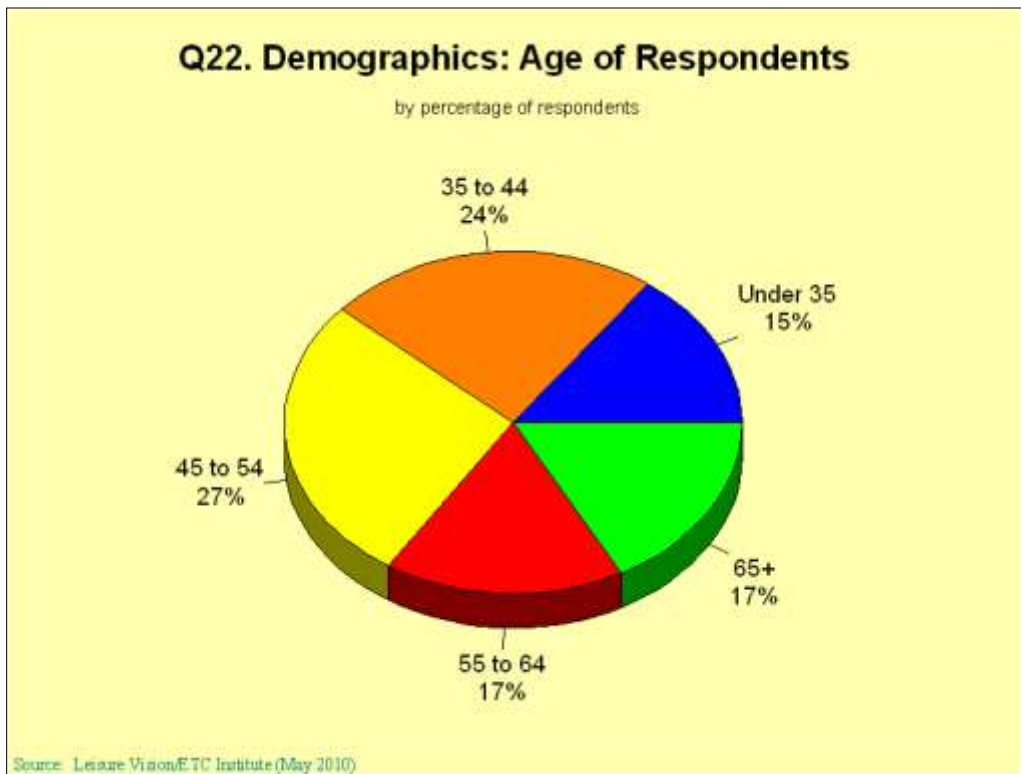
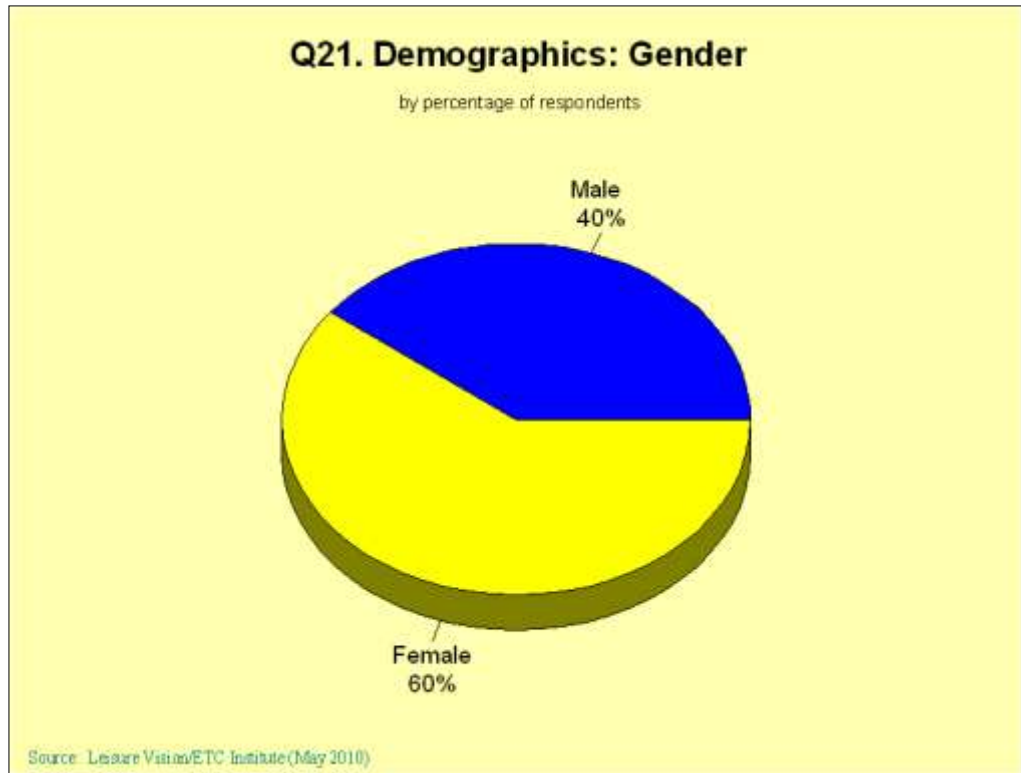
- The most frequently mentioned reasons preventing households from using parks, recreation facilities and programs more often are: “facilities are not well maintained” (30%), “too far from our residence” (26%), “I do not know what is being offered” (26%), and “I do not know what is being offered” (26%).



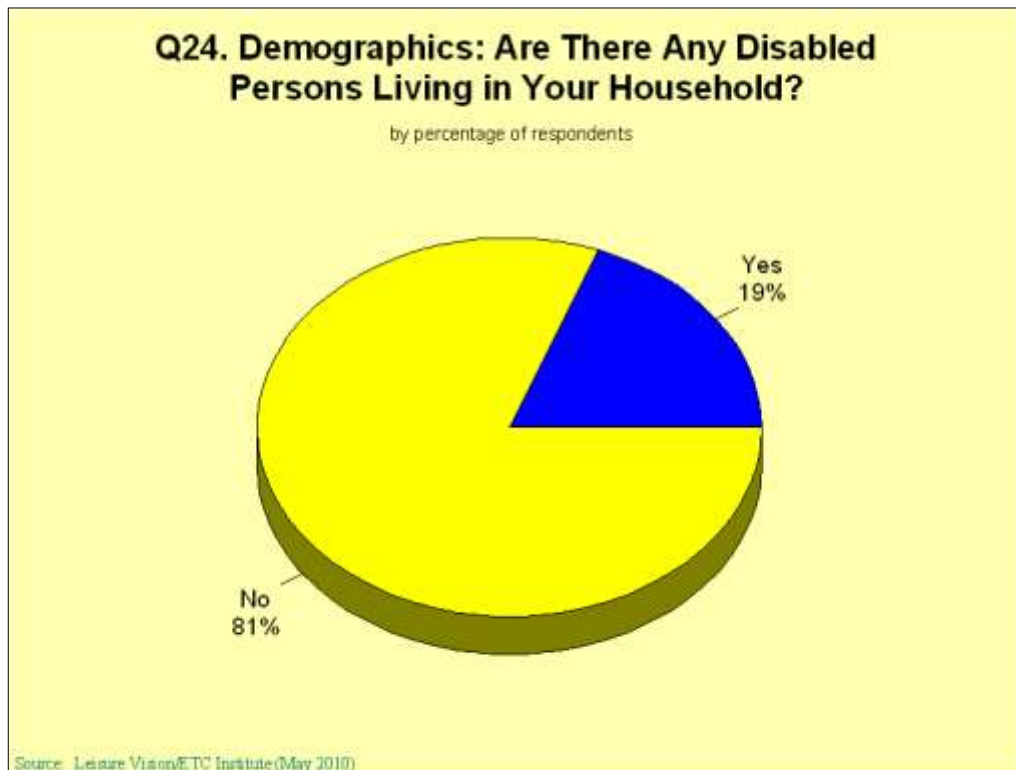
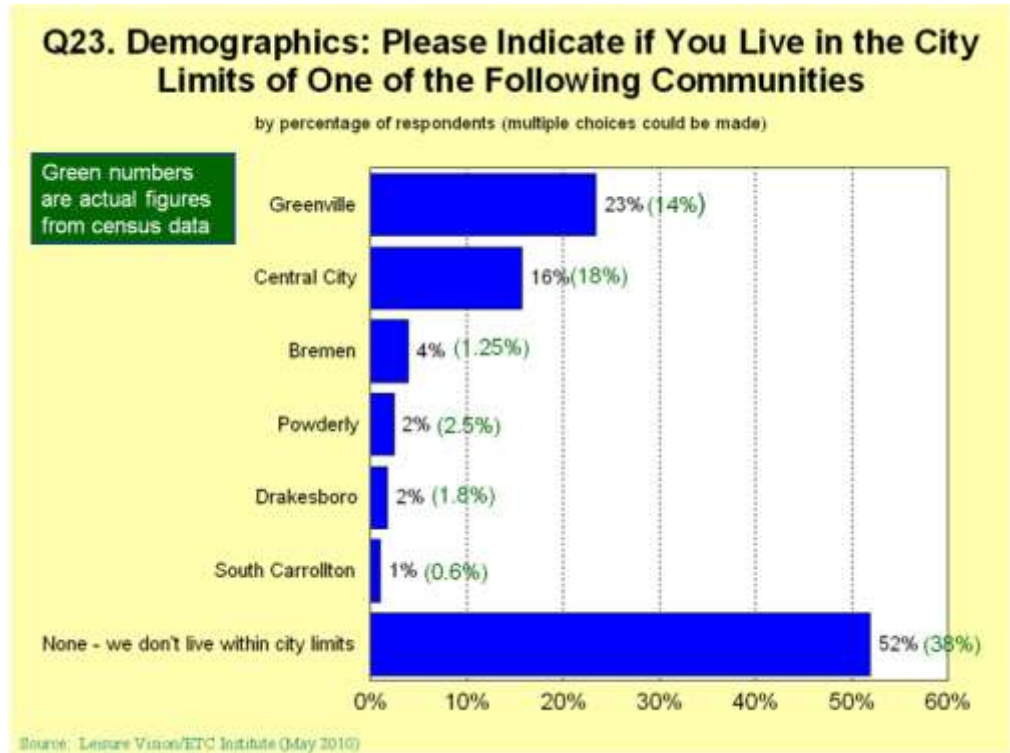
Demographics



Demographics

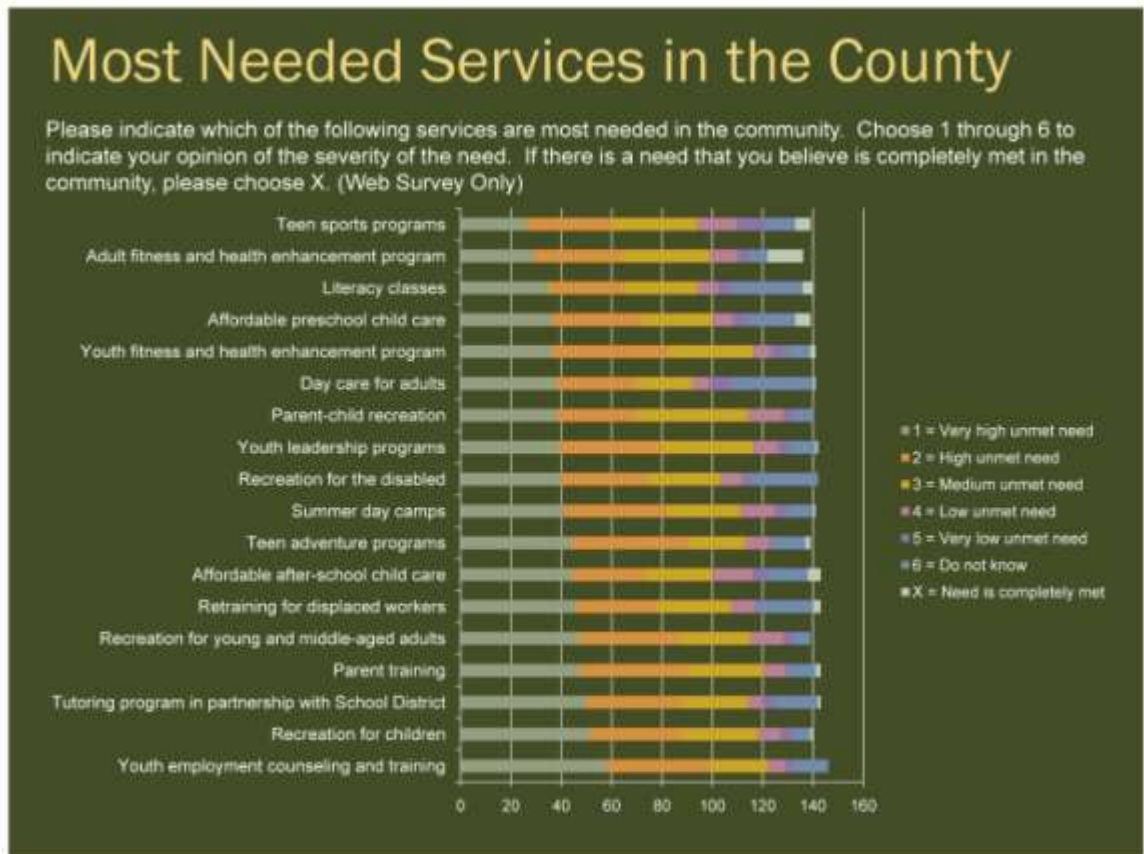


Demographics



29. Most Needed Services in the County

The web/handout survey included a question to identify the most needed services in the County and was not limited to parks and recreation. The items at the bottom of the list which have the highest unmet need are: youth employment counseling and training; recreation for children; tutoring program; parent training; and recreation for adults.



J. Trends in Parks and Recreation

1. The Aging Population

- a. Throughout the country, the average age of the population is increasing. The number of persons in the age group 65 and over is growing rapidly. Census data and state population data indicate that the percentage of the Muhlenberg County population age 65 and older was 15.1% in 1990, 15.5% in 2000 and is expected to increase to 18.3% in 2015. The numbers continually rise as the population increases. As indicated earlier in Table 4, the median age will rise from 34.8 in 1990 to 42.3 in 2015. The relative health of these individuals is better than ever before and the activities they desire are more active than in the past. The days of the old senior citizens centers where they play cards and do more sedentary activities is being replaced by incorporation into larger, more active, community and recreation centers where individuals participate in fitness programs, walking, cardiovascular exercises, aerobics, and many other more active pursuits.
- b. This trend encourages parks and recreation agencies to invest more in activities, programs, and facilities for the older population. This graying of America also generates demand for more paved walking trails, fishing areas, gardens, cultural and nature education, as well as other activities that are in demand for multiple age groups.

2. Family Oriented Aquatic Facilities

- a. The older rectangle and L-shaped swimming pools had a very limited appeal. The desire to have 3 ½' depths of water for flip turns, or competition swimming, dictated a deeper water depth of the pool resulting in a lack of shallow water for younger children. Younger children were relegated to a "baby" pool, which really only appeals to tots, leaving the 4-10 year olds with no desire to visit the swimming pools.
- b. The newer family aquatic centers are geared toward the entire family with zero depth access, shallow water, interactive water spray activities, along with the traditional competition lanes and diving boards. Newer aquatic facilities are also incorporating lazy rivers, which are popular with people of all ages. The newer facilities also provide large water slides. These elements, along with providing shade structures, larger grass beach areas, and quality concessions, have resulted in a complete turn around in the operating costs for aquatic facilities. Whereas the older pools were a drain on the budget, the newer facilities are able to generate funds for the operations cost and some have even shown a surplus, which has been used to pay off some of the debt service for the capital construction. Where older pools have been

renovated to include the newer features, communities have seen as much as a 200% increase in attendance. This demand provides an opportunity for charging higher fees which may result in a greater profit margin.

- c. Another new concept that is sweeping the country is the development of spraygrounds. These have replaced the wading pools at the aquatic facilities and are also developed as freestanding wet playgrounds in other park areas. Spraygrounds have several benefits in that, in most instances, they still recirculate the water, but because there is no standing water, there is no need for lifeguards. Therefore, the operation costs are considerably lower than for a swimming facility. Communities which have had several smaller neighborhood wading pools, have replaced them with spraygrounds to reduce operation costs while increasing interest and attendance.

3. Indoor Family Activity Centers

- a. The typical recreation center that included gymnasium space, locker rooms and a few other attractions have been replaced by much larger, multi-generational facilities that are described later in this text.
- b. The newer facilities have a much stronger emphasis on fitness with aerobics rooms, free weights, exercise machines, cardiovascular areas, walking tracks, indoor swimming pools for both family oriented and lap swimming, lounges, concessions, and climbing walls, along with the traditional basketball and volleyball gymnasiums. These facilities may also include multipurpose rooms, which are used for a wide variety of indoor programming, such as arts and crafts, dance classes, and other community education programs.

4. Trail Linkages and Linear Parks

This trend has been ongoing for a long time, and is still very important in nearly every community where surveys have been conducted. Communities that have extensive trail systems still have a strong desire to continually connect and link the trails to neighborhoods, schools, shopping areas, and other community facilities. These communities are very livable communities with a high quality of life.

5. Revenue Generating Facilities

With the advent of tightened budgets throughout the country, facilities that generate revenue have become increasingly popular because of their ability to offset some of the operating costs. Most notably, the increased use of concessions in parks and at other locations has improved the ability of the public sector to raise money. Multi-field complexes, in

addition to miniature golf courses, carousels, paddleboats and canoe rentals and other creative applications have enhanced the community experience while lessening the tax burden.

6. Dog Parks

The construction of dog parks is an ongoing trend that has been sweeping the country in the last five to ten years. The development of fence enclosed areas where dogs can run leash free can be a positive addition to a community. Dog parks have proven to be good for improving the social interaction skills of dogs and have also been a very good social attraction for the dog owners. Quality dog parks need well-conceived planning. They also need a fairly extensive operating budget that includes staff time for maintenance and upkeep.

7. Extreme Parks

a. Due partly to the growth of extreme sports shown on television, the pursuit of extreme sports activities, especially by teenagers, has increased by hundreds of percent. Nearly every community that does not have a skatepark has a very large contingent of teens and young adults that are strong advocates for skatepark development. Other types of active pursuits in this park type include BMX tracks, mountain bike trails, climbing walls, as well as the skateparks. These activities appeal to a demographic that has decided not to be part of the traditional parks and recreation programming activities.

b. The communities that have developed successful skateparks will entice dozens of teens to gather in the park. These parks can actually be construed as teen oriented parks and should be supplemented with other facilities, such as basketball courts, sand volleyball courts, and snack bars.

8. Fitness

We are reminded every day through the media that Americans are becoming less fit. There is a strong emphasis at the state to the federal levels to improve the fitness of individuals throughout the United States. Local park and recreation departments are building upon this message. They are probably the best organizations to make an impact in the overall fitness of the community through programs, promotions, and facilities that are available to the residents to improve their health and fitness.

9. Tournament Facilities

a. As mentioned in the revenue generation section, tournaments can be a revenue generator by exacting entrance fees and promoting concession sales. There is a trend to develop facilities that are of tournament level quality to attract better teams and better

tournaments to the facilities. These high quality facilities offer a bonus for the local leagues and activities when not being used for tournaments. A balance does need to exist between local league use and use for tournaments.

- b. Facilities must be designed to accommodate tournaments with larger parking lots, arrangement of fields in a cluster such as a wagon wheel configuration for baseball and softball fields. There must be quality restroom facilities, concessions, shade and other amenities throughout the park that make it a desirable place to spend the day or a weekend.

10. Synthetic Turf Fields

Many school systems and municipalities are developing synthetic turf fields to meet the ever increasing demand for soccer, football, lacrosse, rugby and other athletic pursuits. These are higher cost initially, but the ability to play on the fields continuously without the need to water, fertilize, mow, stripe, etc. is a maintenance savings to the community. The fields can be developed to be flat and can accommodate substantial rains without damage to the surface. The fields are safer than overused grass fields. The main benefits of synthetic turf fields include:

- a. Lower long term operating costs per event
- b. Safer surfaces for athletes
- c. Ability to schedule significantly more events on the same area versus natural grass fields
- d. Ability to extend the season by allowing use earlier in spring and later in fall without damaging turf
- e. Less rain outs
- f. In communities with limited fields available, synthetic turf fields allow the maximum use on the same area
- g. No need for watering, mowing, fertilizing or striping

11. Universal Access

Many park systems are developing unique facilities, (especially playgrounds) that are designed to go well beyond the minimum requirement for the Americans with Disabilities Act. By creating an environment that is totally accessible to persons of all ages and abilities, park system administrators are setting the best example for other organizations to follow. In the case of playgrounds, this results in playgrounds with several ground level activities, multiple ramps providing access to the decks, and the use of poured-in-place rubber surfacing.

Several major facilities have developed trails utilizing paved, level surfaces that also have textured edging for the visually impaired.

Fragrant plants and sensory gardens, interactive displays that allow a hands-on approach to education have also been developed to promote a better experience for special populations. While it may not be cost effective to develop this level of universal access at every playground facility, it is the practice of forward thinking recreation departments to install some destination facilities that are developed to this level.

Universal access applies to a lot more than playgrounds; it also applies to aquatic facilities, interpretive facilities, trails, access into buildings and access to all programs and facilities offered by the community.

12. Cultural Education

As the population of cities and counties becomes more diverse, there is a strong desire for more heritage programs. There has also been an increase in participation in many programs for the visual and performing arts. These programs are becoming more common as program offerings initiated by parks and recreation departments increase.

Cultural education covers a lot of ground. It encompasses all of the arts, such as visual and performing arts, as well as heritage recognition. Communities become stronger when its citizens better understand their cultural links to the community.

13. Nature Education

The success of environmental education centers throughout the country indicate that there is a strong desire and need to better educate the public, and especially children, in natural processes, resource management and similar nature education activities. These work well in conjunction with the school systems to supplement their science curriculum. This “environmental education” develops a strong base of support for the large expanses of open space and natural habitats that are owned by the county or municipality. Many park departments and commissions take an outreach approach by providing environmental curriculum to the schools in the form of nature center classes and activities. This tactic provides a method for promoting more use and appreciation of the parks. This is also an opportunity for the county park systems and universities to work closely with the municipal parks and recreation departments to provide a level of programming that the municipalities could not perform on their own.

14. Nationwide Sports Participation

The National Sporting Goods Association (NSGA) conducts a survey every two years of 10,000 households throughout the United States. This sample is selected from 300,000 pre-recruited households. These surveys are used to generate a series of tables that identify trends in sports participation. The Nationwide Ten-Year History of Selected Sports Participation Table (Table 11) identifies the major activities that are

surveyed through this study. The activities are listed by their rank order in the year 2006. For example, exercise/walking is the most participated activity at 87.5 million participants. This is followed by swimming at 56.5 million and exercising with equipment at 52.4 and camping at 48.6 million. The table shows baseball and soccer, as two of the most common activities requested as part of the study, as 19th and 20th on the list with 14.6 and 14.0 million participants respectively. When combining baseball and softball, it increases to a total of 27.0 million. The table indicates that for the ten year period surveyed, baseball and soccer have shown fluctuation, but overall have remained at a steady figure. Table 12 identifies the national trend in youth sports participation and indicates that youth baseball has grown by 3.5% and soccer has grown by 2.7% over the ten year period.

Table 11: Nationwide Ten-Year History of Selected Sports Participation

Participated more than once (in millions) Seven (7) years of age and older						
Sport	2006	2004	2002	2000	1998	1996
Exercise Walking	87.5	84.7	82.2	86.3	77.6	73.3
Swimming	56.5	53.4	53.1	60.7	58.2	60.2
Exercising with Equipment	52.4	52.2	46.8	44.8	46.1	47.8
Camping (vacation/overnight)	48.6	55.3	55.4	49.9	46.5	44.7
Bowling	44.8	43.8	42.4	43.1	40.1	42.9
Fishing	40.6	41.2	44.2	49.3	43.6	45.6
Workout at Club	36.9	31.8	28.9	24.1	26.5	22.5
Bicycle Riding	35.6	40.3	39.7	43.1	43.5	53.3
Aerobic Exercising	33.7	29.5	29	28.6	25.8	24.1
Weight Lifting	32.9	26.2	25.1	24.8	na	na
Billiards/Pool	31.8	34.2	33.1	32.5	32.3	34.5
Hiking	31	28.3	27.2	24.3	27.2	26.5
Boating, Motor/Power	29.3	22.8	26.6	24.2	25.7	28.8
Running/Jogging	28.8	26.7	24.7	22.8	22.5	22.2
Basketball	26.7	27.8	28.9	27.1	29.4	31.8
Golf	24.4	24.5	27.1	26.4	27.5	23.1
Hunting with Firearms	17.8	17.7	19.5	19.1	17.3	18.3
Target Shooting	17.1	19.2	18.9	14.8	12.8	14.7
Baseball	14.6	15.9	15.6	15.6	15.9	14.8

Needs Analysis

Participated more than once (in millions) Seven (7) years of age and older						
Sport	2006	2004	2002	2000	1998	1996
Soccer	14	13.3	13.7	12.9	13.2	13.9
Backpack/Wilderness Camp	13.3	15.3	14.8	15.4	14.6	11.5
Softball	12.4	12.5	13.6	14	15.6	19.9
Football (tackle)	11.9	8.6	7.8	7.5	7.4	9
Volleyball	11.1	11.8	11.5	12.3	14.8	18.5
In-Line Roller Skating	10.5	11.7	18.8	21.8	27	25.5
Tennis	10.4	9.6	11	10	11.2	11.5
Skateboarding	9.7	10.3	9.7	9.1	5.8	4.7
Scooter Riding	9.5	12.9	13.4	11.6	na	na
Mountain Biking (off road)	8.5	8	7.8	7.1	8.6	7.3
Paintball Games	8	9.4	6.9	5.3	na	na
Canoeing	7.1	7.5	7.6	6.2	7.1	8.4
Skiing (alpine)	6.4	6.3	7.4	7.4	7.7	10.5
Water Skiing	6.3	5.3	6.9	5.9	7.2	7.4
Hunting w/Bow & Arrow	5.9	5.8	4.6	4.7	5.6	5.5
Snowboarding	5.2	6.6	5.6	4.3	3.6	3.1
Cheerleading	3.8	3.8	na	na	3.1	na
Wrestling	3.8	na	na	na	na	na
Muzzleloading	3.7	3.8	3.6	2.9	3.1	3.2
Hockey (ice)	2.6	2.4	2.1	1.9	2.1	2.1
Skiing (cross country)	2.6	2.4	2.2	2.3	2.6	3.4

SOURCE: National Sporting Goods Association, Mt Prospect IL 60056 847.296 NSGA FAX: 847.391.9827

Table 12: 2006 Youth Participation in Selected Sports with Comparisons to 1997 (National)

Participated more than once (in thousands) Seven (7) years of age and older							
	Year	Total	Change vs 1997	Total 7-11	Change vs 1997	Total 12-17	Change vs 1997
Total U.S.	1997	240,325		19,466		23,071	
Total U.S.	2006	263,138	9.50%	19,472	0.00%	25,261	9.50%
Sport							
Baseball							
Baseball	1997	14,146		4,739		3,678	
Baseball	2006	14,646	3.50%	3,691	-22.10%	3,910	6.30%
Basketball							
Basketball	1997	30,660		6,837		7,880	
Basketball	2006	26,735	-12.80%	5,427	-20.60%	7,218	-8.40%
Bicycle Riding							
Bicycle Riding	1997	45,119		11,190		8,482	
Bicycle Riding	2006	35,621	-21.10%	7,872	-29.60%	6,341	-25.30%
Bowling							
Bowling	1997	44,770		5,731		7,118	
Bowling	2006	44,779	0.00%	5,060	-11.70%	7,612	6.90%
Fishing (Fresh water)							
Fishing (Fresh water)	1997	38,956		4,831		5,025	
Fishing (Fresh water)	2006	36,637	-6.00%	4,470	-7.50%	4,067	-19.10%
Football (Tackle)							
Football (Tackle)	1997	8,219		1,841		2,983	
Football (Tackle)	2006	11,888	44.60%	2,199	19.50%	4,149	39.10%
Golf							
Golf	1997	26,216		1,049		2,255	
Golf	2006	24,428	-6.80%	879	-16.10%	2,150	-4.70%
Ice Hockey							
Ice Hockey	1997	1,925		304		406	
Ice Hockey	2006	2,559	32.90%	430	41.30%	335	-17.50%
In-line Skating							

Needs Analysis

Participated more than once (in thousands) Seven (7) years of age and older							
	Year	Total	Change vs 1997	Total 7-11	Change vs 1997	Total 12-17	Change vs 1997
In-line Skating	1997	26,550		9,152		7,163	
In-line Skating	2006	10,497	-60.50%	3,103	-66.10%	3,054	-57.40%
Mountain Biking (off road)							
Mountain Biking (off road)	1997	8,109		997		1,192	
Mountain Biking (off road)	2006	8,543	5.40%	863	-13.50%	1,000	-16.10%
Skateboarding							
Skateboarding	1997	6,334		2,654		2,401	
Skateboarding	2006	9,731	53.60%	2,910	9.60%	4,437	84.80%
Skiing (alpine)							
Skiing (alpine)	1997	8,866		913		1,321	
Skiing (alpine)	2006	6,394	-27.90%	422	-53.80%	882	-33.20%
Snowboarding							
Snowboarding	1997	2,816		476		1,093	
Snowboarding	2006	5,205	84.80%	859	80.50%	1,686	54.30%
Soccer							
Soccer	1997	13,651		5,624		4,109	
Soccer	2006	14,024	2.70%	4,796	-14.70%	4,095	-0.30%
Softball							
Softball	1997	16,339		2,385		3,431	
Softball	2006	12,442	-23.90%	2,339	-1.90%	2,824	-17.70%
Tennis							
Tennis	1997	11,106		1,022		1,766	
Tennis	2006	10,356	-6.80%	787	-23.00%	2,216	25.50%
Volleyball							
Volleyball	1997	17,836		1,801		4,869	
Volleyball	2006	11,062	-38.00%	1,095	-39.20%	3,971	-18.40%

K. Benchmark Comparison to Other Kentucky Communities

One method of evaluating the parks and recreation programs and services offered in the community is to perform a benchmarking comparison to other

communities. This was prepared as part of the master planning process. Responses were received from 27 other communities. Detailed comparisons of the survey are included in Appendix D. These tables provide separate comparisons for the following:

1. Park Land Comparison
2. Budget Comparison
3. Staff Comparison
4. Athletic Field Comparison
5. Aquatic Center Comparison
6. Recreation Center Comparison

Summary of Results

1. Park Land Comparisons

This table indicates that the common factors, which include the columns on the far right, include the percentage of parkland for active recreation, citizens per active park acre, and total park acres per 1,000 residents. The citizens per park acre category indicates there are 217 citizens per active park acre in Muhlenberg County, which is better than the average of 248 but worse than the median of 184 acres.

2. Budget Comparisons

The budget comparisons table also has some categories with common factors, such as the column with the expenditure per person of the communities, which the survey average was \$29 per person and the median was \$20. Muhlenberg County's budget for the county and cities was at a rate of \$5.51 per person, well below the average and median. The communities that are known for having better parks and recreation system are much higher than for Muhlenberg County

3. Staff Comparisons

It is difficult to measure staff for park in Muhlenberg County because there are no persons dedicated to parks and recreation. All personnel is from other departments of the county or cities and no programming staff is available. This table will provide some guidance for the future of the department.

4. Athletic Fields Comparisons

Not as many communities participated in this part of the survey so the data is not very conclusive. This table looks at the various types of fields within the county. For each of the categories, there is a figure for citizens per field during the prime season, which is the common denominator. For Muhlenberg County there are 7,780 citizens per field in the prime season

for soccer, which is much worse than the average of 4. The softball and baseball fields are better served than the average of other communities with 1,729 citizens per field during the prime season as compared to the average of 5,164. Football is a little less served than the average.

5. Aquatic Center Comparisons

The only currently operating public pool in Muhlenberg is in Greenville. This table will provide some guidance as a new recommended family aquatic center is developed.

6. Recreation Center Comparisons

The survey included ten communities with some type of indoor gym or recreation center. This table will also provide some direction as a new planned facility is developed for Muhlenberg County.